



Population and dwellings

Number of people counted

- 612 people usually live in Glenleith. This is a decrease of 27 people, or 4.2 percent, since the 2006 Census.
- Glenleith has less than one percent of Dunedin City's population.

Population of Glenleith and Dunedin City		
2013 Census		
Sex	Glenleith	Dunedin City
Male	300	57,666
Female	312	62,583
Total people	612	120,246

Source: Statistics New Zealand

Note: All figures are for the census usually resident population count.

Number of dwellings counted

- There are 243 occupied dwellings and 12 unoccupied dwellings in Glenleith.
- For Dunedin City as a whole, there are 46,590 occupied dwellings and 3,915 unoccupied dwellings.
- There are 6 dwellings under construction in Glenleith, and 186 under construction in Dunedin City.

Note: This time series is irregular. Because the 2011 Census was cancelled after the Canterbury earthquake on 22 February 2011, the gap between this census and the last one is seven years. The change in the data between 2006 and 2013 may be greater than in the usual five-year gap between censuses. Be careful when comparing trends.

This data has been randomly rounded to protect confidentiality. Individual figures may not add up to totals, and values for the same data may vary in different text, tables and graphs. For areas with small populations, the data may not look as expected because of this rounding.

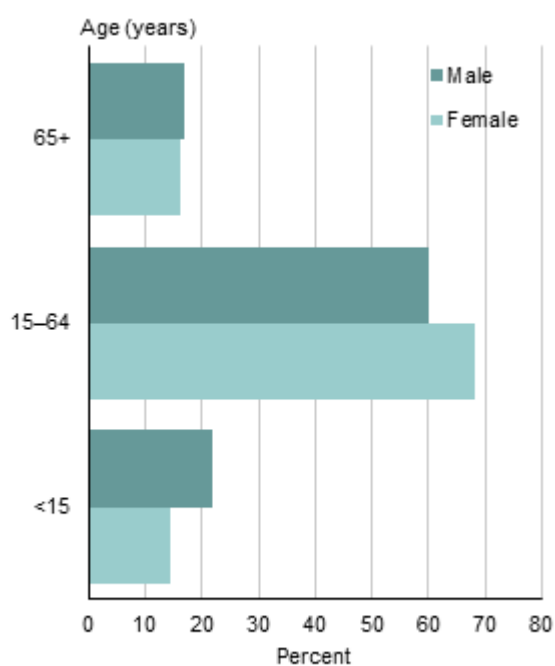
Age and sex

Total population

- The median age (half are younger, and half older, than this age) is 44.6 years for people in Glenleith. The median age in Dunedin City is 36.7 years.
- 17.2 percent of people in Glenleith are aged 65 years and over, compared with 14.9 percent of the total Dunedin City population.
- 18.7 percent of people are aged under 15 years in Glenleith, compared with 16.2 percent for all of Dunedin City.

Broad age group and sex of people

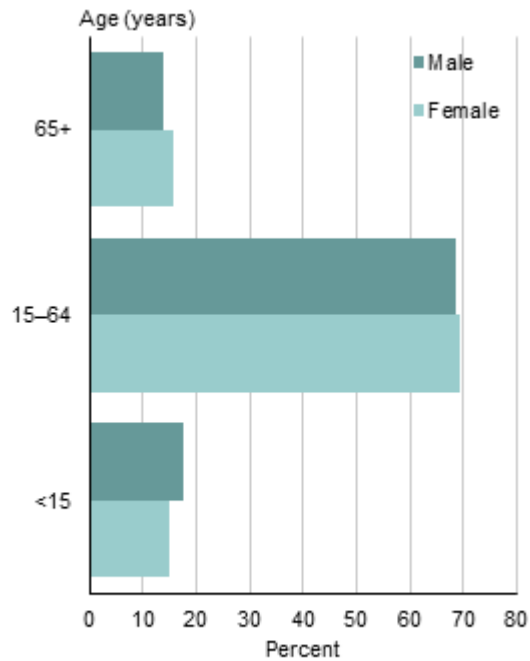
Glenleith
2013 Census



Source: Statistics New Zealand

Broad age group and sex of people

Dunedin City
2013 Census



Source: Statistics New Zealand

Note: Total population figures are for the census usually resident population count.

Some percentages may be too small to show on graph.

This data has been randomly rounded to protect confidentiality. Individual figures may not add up to totals, and values for the same data may vary in different text, tables and graphs. For areas with small populations, the data may not look as expected because of this rounding.

Cultural diversity

Ethnic groups

- The most common ethnic group in Glenleith is European, compared with European for Dunedin City as a whole.

Ethnic groups in Glenleith and Dunedin City		
2013 Census		
Ethnic group ⁽¹⁾	Glenleith (percent)	Dunedin City (percent)
European	92.9	88.3
Māori	5.1	7.7
Pacific peoples	1.5	2.5
Asian	4.1	6.2
Middle Eastern, Latin American, African	0.5	1.0
Other ethnicity	2.5	2.2

1. Includes all people who stated each ethnic group, whether as their only ethnic group or as one of several. Where a person reported more than one ethnic group, they have been counted in each applicable group. As a result percentages do not add up to 100.

Source: Statistics New Zealand

Birthplace

- 20.9 percent of people in Glenleith were born overseas, compared with 18.1 percent for Dunedin City as a whole.
- For people born overseas who are now living in Glenleith, the most common birthplace was UK and Ireland, compared with UK and Ireland for people born overseas in all of Dunedin City.

Languages spoken

- After English, the next most common language spoken in Glenleith is German, which was spoken by 2.6 percent of people. For Dunedin City as a whole, the most common language apart from English is French, spoken by 1.8 percent of people.
- 1.5 percent of people in Glenleith speak te reo Māori, compared with 1.8 percent of people for all of Dunedin City.
- New Zealand Sign Language is used by 1.5 percent of people in Glenleith, compared with less than one percent of people for all of Dunedin City.
- 85.2 percent of people in Glenleith speak only one language, compared with 86.7 percent of people for all of Dunedin City.

Note: All figures are for the census usually resident population count.

This data has been randomly rounded to protect confidentiality. Individual figures may not add up to totals, and values for the same data may vary in different text, tables and graphs. For areas with small populations, the data may not look as expected because of this rounding.

Relationship status

Total population aged 15 years and over

- 27.5 percent of people aged 15 years and over living in Glenleith have never married, 59.4 percent are married, and 13.8 percent are separated, divorced or widowed.
- 30.2 percent of people in Glenleith aged 15 years and over who have never been married live with a partner.

Legally registered relationship status for people aged 15 years and over

Glenleith and Dunedin City
2013 Census



Source: Statistics New Zealand

Note: Total population figures are for the census usually resident population count.

Some percentages may be too small to show on graph.

This data has been randomly rounded to protect confidentiality. Individual figures may not add up to totals, and values for the same data may vary in different text, tables and graphs. For areas with small populations, the data may not look as expected because of this rounding.

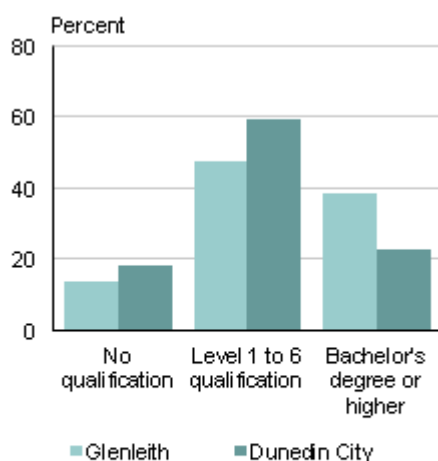
Qualifications

Total population aged 15 years and over

- 86.5 percent of people aged 15 years and over in Glenleith have a formal qualification, compared with 81.9 percent in Dunedin City.
- In Glenleith, 38.7 percent of people aged 15 years and over held a bachelor's degree or higher as their highest qualification, compared with 22.7 percent for Dunedin City as a whole.

Highest qualification for people aged 15 years and over

Glenleith and Dunedin City
2013 Census



Note: Level 1 to 6 qualification category includes level 1 to 4 certificates, level 5 and 6 diploma and overseas secondary school qualification.

Source: Statistics New Zealand

Note: Total population figures are for the census usually resident population count.

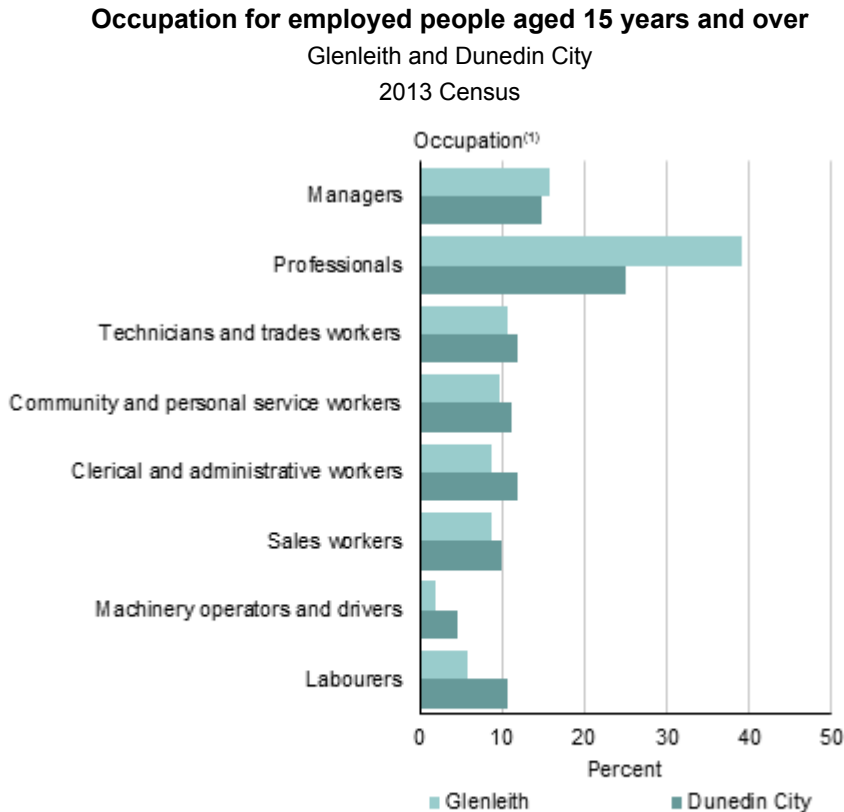
Some percentages may be too small to show on graph.

This data has been randomly rounded to protect confidentiality. Individual figures may not add up to totals, and values for the same data may vary in different text, tables and graphs. For areas with small populations, the data may not look as expected because of this rounding.

Work

Total population aged 15 years and over

- The unemployment rate in Glenleith is 4.6 percent for people aged 15 years and over, compared with 7.5 percent for all of Dunedin City.
- The most common occupational group in Glenleith is 'professionals', and 'professionals' is the most common occupational group in Dunedin City.



1. Australian and New Zealand Standard Classification of Occupations (ANZSCO V1.1).
Source: Statistics New Zealand

Note: Total population figures are for the census usually resident population count.

Some percentages may be too small to show on graph.

This data has been randomly rounded to protect confidentiality. Individual figures may not add up to totals, and values for the same data may vary in different text, tables and graphs. For areas with small populations, the data may not look as expected because of this rounding.

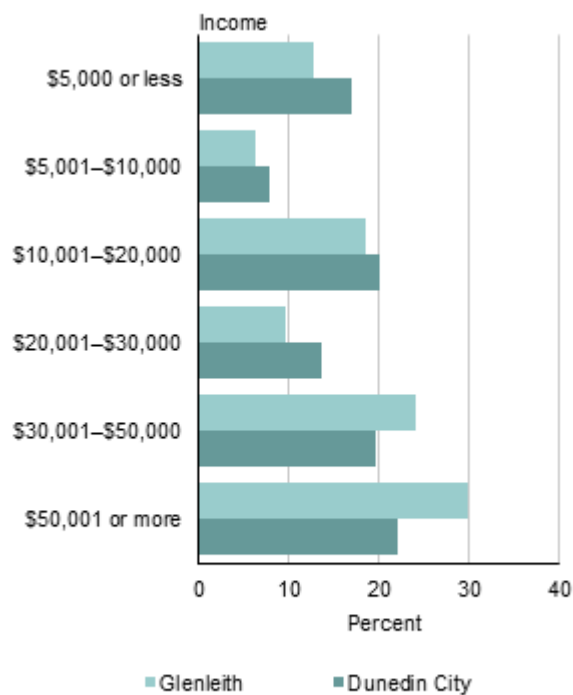
Income

Total population aged 15 years and over

- For people aged 15 years and over, the median income (half earn more, and half less, than this amount) in Glenleith is \$32,200. This compares with a median of \$23,300 for all of Dunedin City.
- 37.3 percent of people aged 15 years and over in Glenleith have an annual income of \$20,000 or less, compared with 44.8 percent of people for Dunedin City as a whole.
- In Glenleith, 30.4 percent of people aged 15 years and over have an annual income of more than \$50,000, compared with 22.0 percent of people in Dunedin City.

Total personal income for people aged 15 years and over

Glenleith and Dunedin City
2013 Census



Source: Statistics New Zealand

Note: Total population figures are for the census usually resident population count.

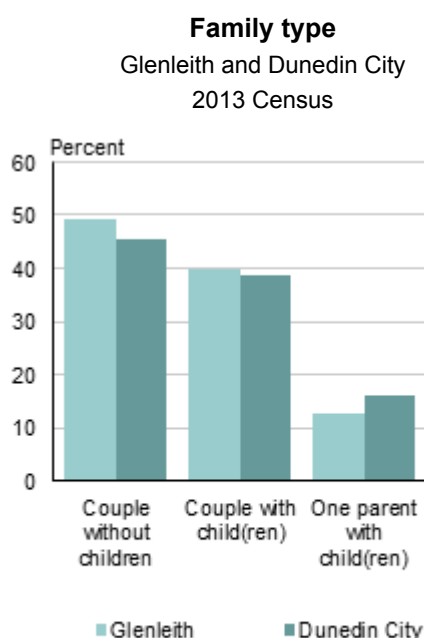
Some percentages may be too small to show on graph.

This data has been randomly rounded to protect confidentiality. Individual figures may not add up to totals, and values for the same data may vary in different text, tables and graphs. For areas with small populations, the data may not look as expected because of this rounding.

Families

Family type

- Couples with children make up 39.7 percent of all families in Glenleith, while couples without children make up 49.2 percent of all families.
- In Dunedin City, couples with children make up 38.6 percent of all families, while couples without children make up 45.4 percent of all families.
- 12.7 percent of families in Glenleith are one parent with children families, while one parent with children families make up 16.0 percent of families for Dunedin City as a whole.



Source: Statistics New Zealand

Note: All figures are for families in occupied private dwellings.

Some percentages may be too small to show on graph.

This data has been randomly rounded to protect confidentiality. Individual figures may not add up to totals, and values for the same data may vary in different text, tables, and graphs. For areas with small populations, the data may not look as expected because of this rounding.

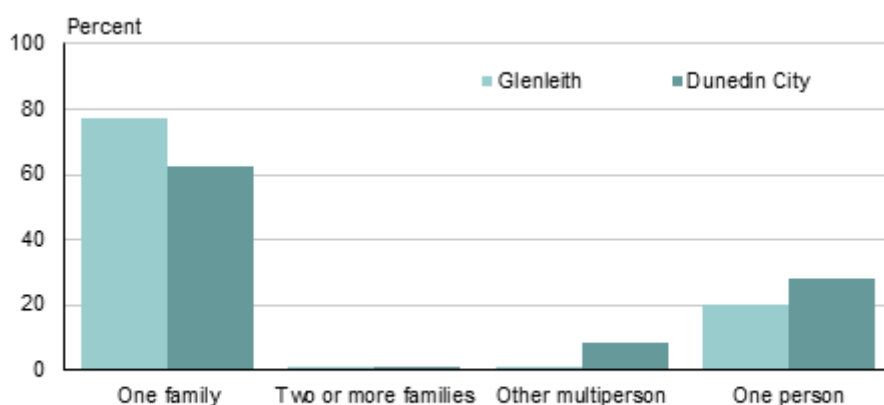
Households

Household composition

- One-family households make up 77.2 percent of all households in Glenleith. For Dunedin City as a whole, one-family households make up 62.5 percent of all households.
- In Glenleith, there are 51 one-person households making up 21.5 percent of all households. In Dunedin City, one-person households make up 27.9 percent of all households.
- The average household size in Glenleith is 2.5 people, compared with an average of 2.5 people per household for all of Dunedin City.

Household composition

Glenleith and Dunedin City
2013 Census



Source: Statistics New Zealand

Note: All figures are for households in occupied private dwellings.

Some percentages may be too small to show on graph.

This data has been randomly rounded to protect confidentiality. Individual figures may not add up to totals, and values for the same data may vary in different text, tables, and graphs. For areas with small populations, the data may not look as expected because of this rounding.

Phone, fax, and Internet

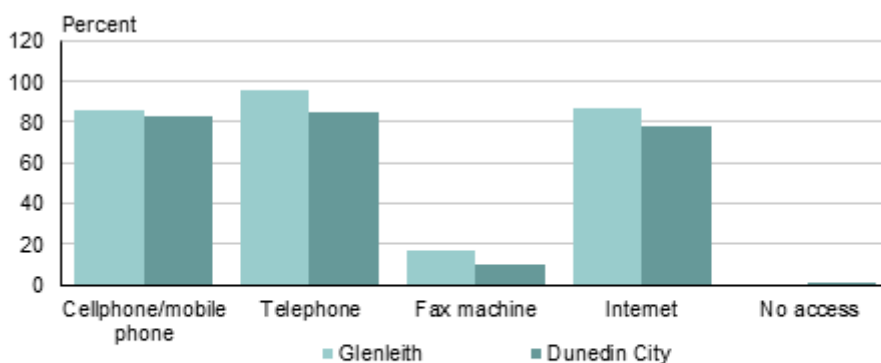
Access to phones, fax machines, and Internet

- 87.3 percent of households in Glenleith have access to the Internet, compared with 77.8 percent of households in Dunedin City.
- In Glenleith, 86.1 percent of households have access to a cellphone, compared with 83.4 percent of households for Dunedin City as a whole.

Access to phones, fax machines, and Internet

Glenleith and Dunedin City

2013 Census



Note: Households can access more than one type of telecommunication device. Therefore percentages do not add up to 100.

Source: Statistics New Zealand

Note: All figures are for households in occupied private dwellings.

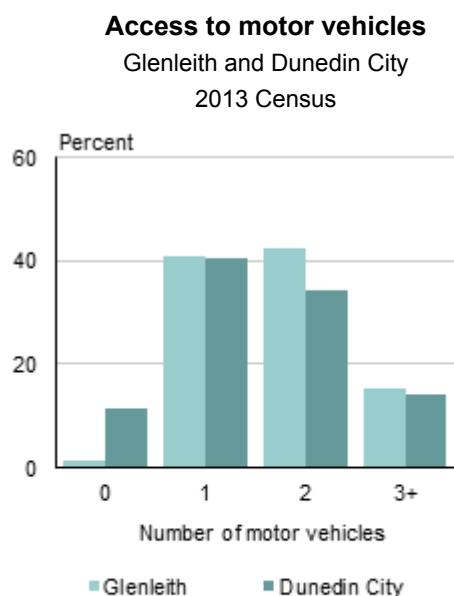
Some percentages may be too small to show on graph.

This data has been randomly rounded to protect confidentiality. Individual figures may not add up to totals, and values for the same data may vary in different text, tables and graphs. For areas with small populations, the data may not look as expected because of this rounding.

Transport

Access to motor vehicles

- 15.4 percent of households in Glenleith have access to three or more motor vehicles, compared with 14.1 percent of all households in Dunedin City.



Note: Some percentages may be too small to show on graph.
Source: Statistics New Zealand

Note: All figures are for households in occupied private dwellings.

Some percentages may be too small to show on graph.

Main means of travel to work

- The most common means of travel to work on census day for people in Glenleith was driving a private car, truck or van (67.1 percent of people who travelled to work used this form of transport).
- This was followed by driving a company car, truck or van (10.6 percent) and passenger in a car, truck, van or company bus (7.1 percent).
- For Dunedin City as a whole, the most common means of travel to work was driving a private car, truck or van, followed by driving a company car, truck or van and walking or jogging.

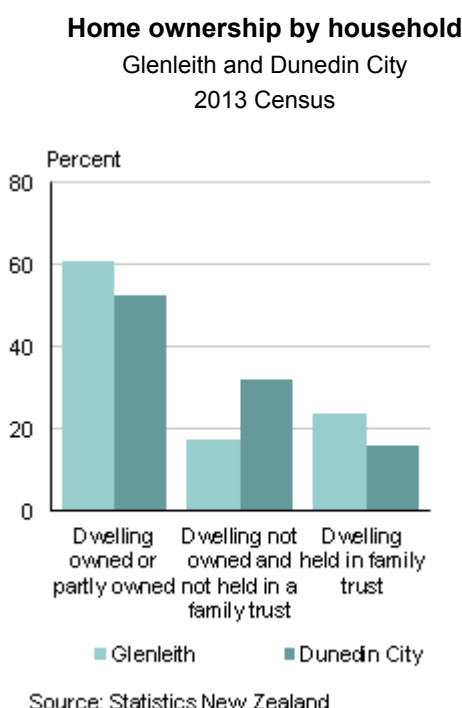
Note: All figures are for the census usually resident population count.

This data has been randomly rounded to protect confidentiality. Individual figures may not add up to totals, and values for the same data may vary in different text, tables, and graphs. For areas with small populations, the data may not look as expected because of this rounding.

Housing

Home ownership

- In Glenleith, 84.2 percent of households in occupied private dwellings owned the dwelling or held it in a family trust.
- For Dunedin City as a whole, 67.9 percent of households in occupied private dwellings owned the dwelling or held it in a family trust.
- For households in Glenleith who rented the dwelling that they lived in, the median weekly rent paid was \$300. This compared with \$250 for Dunedin City.



Note: All figures are for households in occupied private dwellings.

Some percentages may be too small to show on graph.

This data has been randomly rounded to protect confidentiality. Individual figures may not add up to totals, and values for the same data may vary in different text, tables and graphs. For areas with small populations, the data may not look as expected because of this rounding.

Building consents

Building consent data for the year ended December 2013 showed that:

- The total number of building consents issued for dwellings, including apartments, in Glenleith was 5.
- The total number of building consents issued for apartments in Glenleith was 0.
- The total value of residential building work in Glenleith was \$1,415,013.
- The total value of non-residential building work in Glenleith was \$0.

Note: Building consent data is obtained from all accredited building consent authorities (ie territorial authorities) and is compiled if the building consent issued is valued over \$5000. See data quality information on building consents.

Business

Business demographics

Business demographic data for the year ended February 2013 showed that:

- There were 32 business locations (geographic units) in Glenleith compared with 10,771 for all of Dunedin City. This is a decrease of 15.8 percent from the year ended February 2006 for Glenleith.
- There were 30 paid employees in Glenleith compared with 52,890 for all of Dunedin City. This is an increase of 20.0 percent from the year ended February 2006 for Glenleith.

Top five industries in Glenleith				
By employee count				
For year ended February 2013				
Industry (ANZSIC06) ⁽¹⁾	Glenleith		Dunedin City	
	Employee count	Percent of total employee count	Employee Count	Percent of total employee count
Other services	9	30.0	1,840	3.5
Accommodation and food services	9	30.0	4,390	8.3
Professional, scientific and technical services	3	10.0	3,130	5.9
Financial and insurance services	3	10.0	940	1.8
Agriculture, forestry and fishing	0	0.0	890	1.7

1. Australian and New Zealand Standard Industrial Classification 2006 (ANZSIC06 V1.0).

Note: Table may not show five industries as not all area units have five industries within their boundaries.

Some area units may have more than one industry with the same employee count but the table has been restricted to five industries.

Source: Statistics New Zealand

Note: Business demographic data is sourced from a register of economically significant businesses which is maintained by Statistics New Zealand. See data quality information on business demographics.

Employee count data has been randomly rounded. Individual figures may not add up to totals, and values for the same data may vary in different text, tables and graphs. For areas with small populations, the data may not look as expected because of this rounding.