



Population and dwellings

Number of people counted

- 624 people usually live in Akaroa. This is an increase of 54 people, or 9.5 percent, since the 2006 Census.
- Akaroa has less than one percent of Christchurch City's population.

Population of Akaroa and Christchurch City		
2013 Census		
Sex	Akaroa	Christchurch City
Male	297	167,829
Female	327	173,640
Total people	624	341,469

Source: Statistics New Zealand

Note: All figures are for the census usually resident population count.

Number of dwellings counted

- There are 342 occupied dwellings and 567 unoccupied dwellings in Akaroa.
- For Christchurch City as a whole, there are 131,007 occupied dwellings and 17,784 unoccupied dwellings.
- There are 3 dwellings under construction in Akaroa, and 765 under construction in Christchurch City.

Note: This time series is irregular. Because the 2011 Census was cancelled after the Canterbury earthquake on 22 February 2011, the gap between this census and the last one is seven years. The change in the data between 2006 and 2013 may be greater than in the usual five-year gap between censuses. Be careful when comparing trends.

This data has been randomly rounded to protect confidentiality. Individual figures may not add up to totals, and values for the same data may vary in different text, tables and graphs. For areas with small populations, the data may not look as expected because of this rounding.

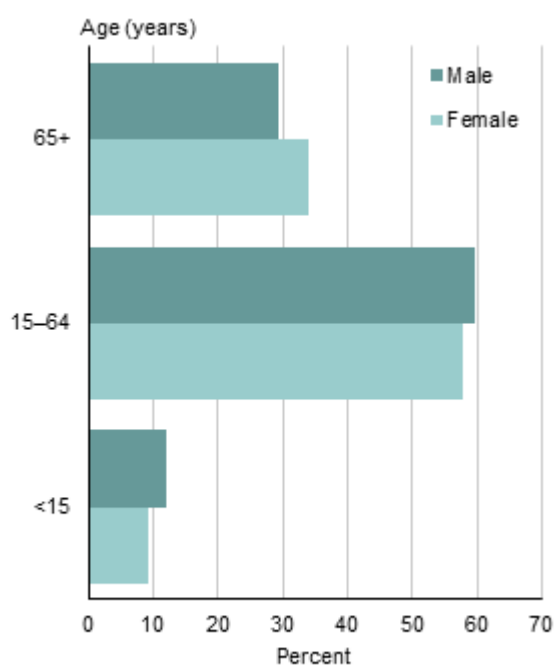
Age and sex

Total population

- The median age (half are younger, and half older, than this age) is 54.8 years for people in Akaroa. The median age in Christchurch City is 38.6 years.
- 31.3 percent of people in Akaroa are aged 65 years and over, compared with 15.0 percent of the total Christchurch City population.
- 10.1 percent of people are aged under 15 years in Akaroa, compared with 17.8 percent for all of Christchurch City.

Broad age group and sex of people

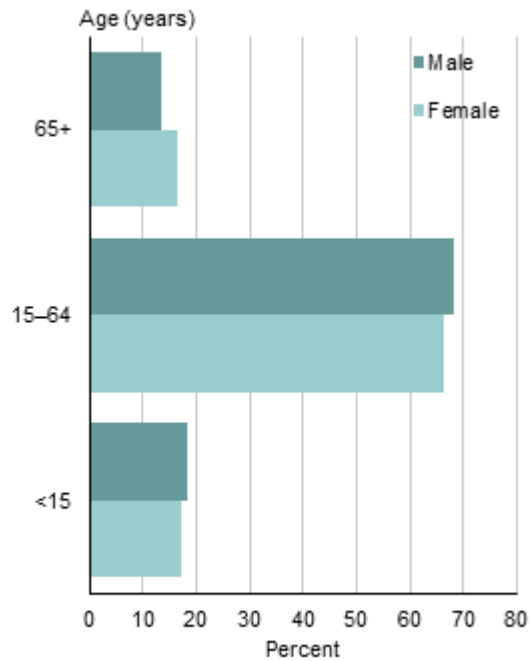
Akaroa
2013 Census



Source: Statistics New Zealand

Broad age group and sex of people

Christchurch City
2013 Census



Source: Statistics New Zealand

Note: Total population figures are for the census usually resident population count.

Some percentages may be too small to show on graph.

This data has been randomly rounded to protect confidentiality. Individual figures may not add up to totals, and values for the same data may vary in different text, tables and graphs. For areas with small populations, the data may not look as expected because of this rounding.

Cultural diversity

Ethnic groups

- The most common ethnic group in Akaroa is European, compared with European for Christchurch City as a whole.

Ethnic groups in Akaroa and Christchurch City		
2013 Census		
Ethnic group ⁽¹⁾	Akaroa (percent)	Christchurch City (percent)
European	93.8	83.9
Māori	9.8	8.5
Pacific peoples	1.0	3.1
Asian	0.5	9.4
Middle Eastern, Latin American, African	0.5	1.0
Other ethnicity	1.6	1.9

1. Includes all people who stated each ethnic group, whether as their only ethnic group or as one of several. Where a person reported more than one ethnic group, they have been counted in each applicable group. As a result percentages do not add up to 100.

Source: Statistics New Zealand

Birthplace

- 19.0 percent of people in Akaroa were born overseas, compared with 22.2 percent for Christchurch City as a whole.
- For people born overseas who are now living in Akaroa, the most common birthplace was UK and Ireland, compared with Asia for people born overseas in all of Christchurch City.

Languages spoken

- After English, the next most common language spoken in Akaroa is German, which was spoken by 3.1 percent of people. For Christchurch City as a whole, the most common language apart from English is te reo Māori, spoken by 1.8 percent of people.
- 2.6 percent of people in Akaroa speak te reo Māori, compared with 1.8 percent of people for all of Christchurch City.
- New Zealand Sign Language is used by 0 percent of people in Akaroa, compared with less than one percent of people for all of Christchurch City.
- 88.1 percent of people in Akaroa speak only one language, compared with 84.2 percent of people for all of Christchurch City.

Note: All figures are for the census usually resident population count.

This data has been randomly rounded to protect confidentiality. Individual figures may not add up to totals, and values for the same data may vary in different text, tables and graphs. For areas with small populations, the data may not look as expected because of this rounding.

Relationship status

Total population aged 15 years and over

- 26.8 percent of people aged 15 years and over living in Akaroa have never married, 49.4 percent are married, and 23.8 percent are separated, divorced or widowed.
- 37.8 percent of people in Akaroa aged 15 years and over who have never been married live with a partner.

Legally registered relationship status for people aged 15 years and over

Akaroa and Christchurch City
2013 Census



Source: Statistics New Zealand

Note: Total population figures are for the census usually resident population count.

Some percentages may be too small to show on graph.

This data has been randomly rounded to protect confidentiality. Individual figures may not add up to totals, and values for the same data may vary in different text, tables and graphs. For areas with small populations, the data may not look as expected because of this rounding.

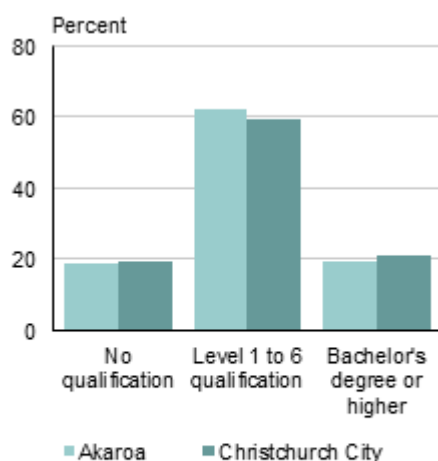
Qualifications

Total population aged 15 years and over

- 82.0 percent of people aged 15 years and over in Akaroa have a formal qualification, compared with 80.4 percent in Christchurch City.
- In Akaroa, 19.2 percent of people aged 15 years and over held a bachelor's degree or higher as their highest qualification, compared with 21.1 percent for Christchurch City as a whole.

Highest qualification for people aged 15 years and over

Akaroa and Christchurch City
2013 Census



Note: Level 1 to 6 qualification category includes level 1 to 4 certificates, level 5 and 6 diploma and overseas secondary school qualification.
Source: Statistics New Zealand

Note: Total population figures are for the census usually resident population count.

Some percentages may be too small to show on graph.

This data has been randomly rounded to protect confidentiality. Individual figures may not add up to totals, and values for the same data may vary in different text, tables and graphs. For areas with small populations, the data may not look as expected because of this rounding.

Work

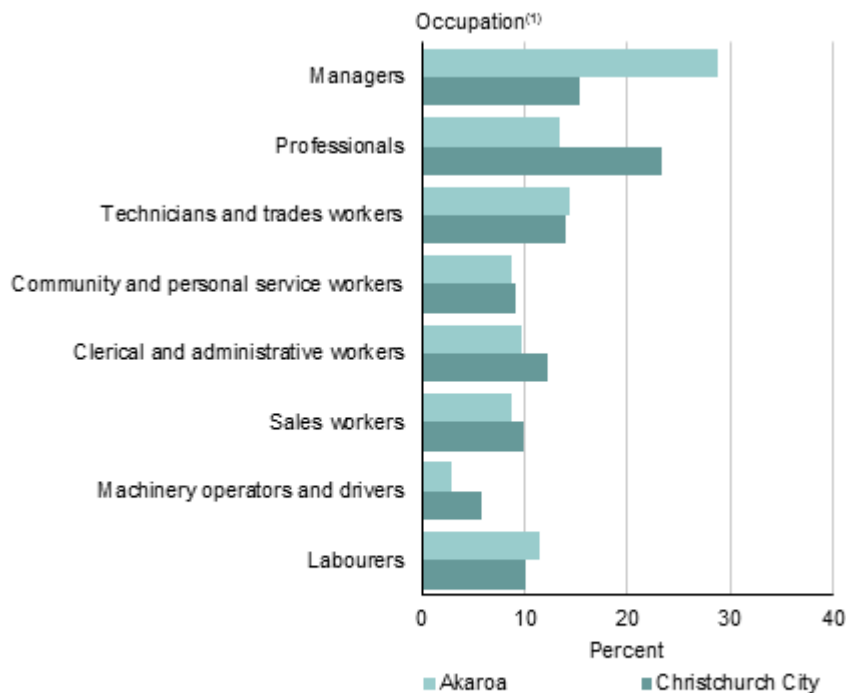
Total population aged 15 years and over

- The unemployment rate in Akaroa is less than one percent for people aged 15 years and over, compared with 5.1 percent for all of Christchurch City.
- The most common occupational group in Akaroa is 'managers', and 'professionals' is the most common occupational group in Christchurch City.

Occupation for employed people aged 15 years and over

Akaroa and Christchurch City

2013 Census



1. Australian and New Zealand Standard Classification of Occupations (ANZSCO V1.1).

Source: Statistics New Zealand

Note: Total population figures are for the census usually resident population count.

Some percentages may be too small to show on graph.

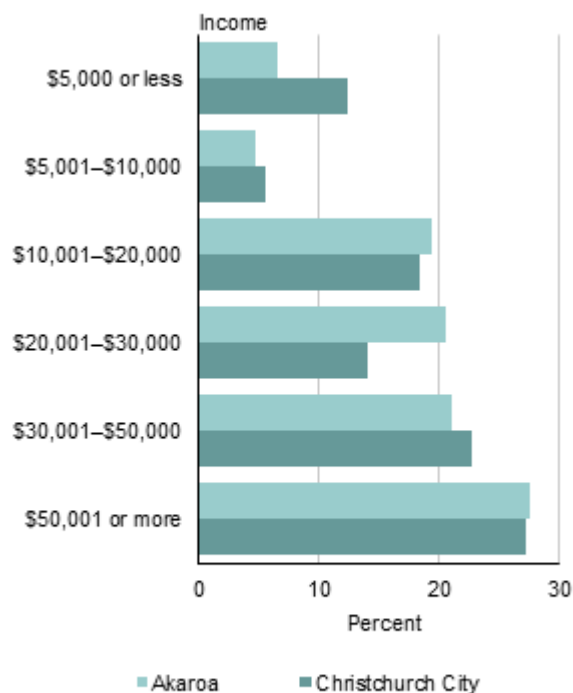
This data has been randomly rounded to protect confidentiality. Individual figures may not add up to totals, and values for the same data may vary in different text, tables and graphs. For areas with small populations, the data may not look as expected because of this rounding.

Income

Total population aged 15 years and over

- For people aged 15 years and over, the median income (half earn more, and half less, than this amount) in Akaroa is \$29,500. This compares with a median of \$29,800 for all of Christchurch City.
- 31.2 percent of people aged 15 years and over in Akaroa have an annual income of \$20,000 or less, compared with 36.3 percent of people for Christchurch City as a whole.
- In Akaroa, 27.6 percent of people aged 15 years and over have an annual income of more than \$50,000, compared with 27.1 percent of people in Christchurch City.

Total personal income for people aged 15 years and over
Akaroa and Christchurch City
2013 Census



Source: Statistics New Zealand

Note: Total population figures are for the census usually resident population count.

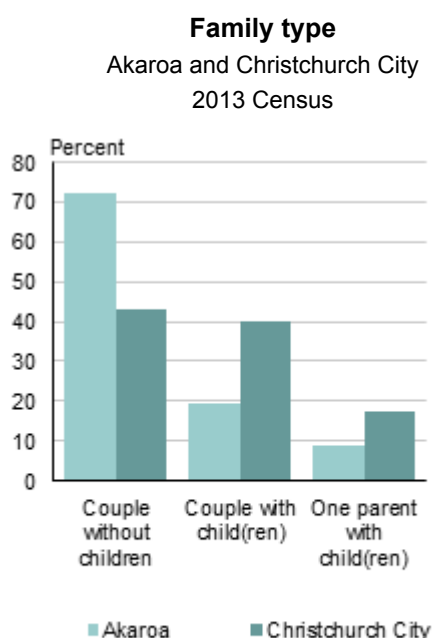
Some percentages may be too small to show on graph.

This data has been randomly rounded to protect confidentiality. Individual figures may not add up to totals, and values for the same data may vary in different text, tables and graphs. For areas with small populations, the data may not look as expected because of this rounding.

Families

Family type

- Couples with children make up 19.3 percent of all families in Akaroa, while couples without children make up 71.9 percent of all families.
- In Christchurch City, couples with children make up 39.8 percent of all families, while couples without children make up 42.8 percent of all families.
- 8.8 percent of families in Akaroa are one parent with children families, while one parent with children families make up 17.4 percent of families for Christchurch City as a whole.



Source: Statistics New Zealand

Note: All figures are for families in occupied private dwellings.

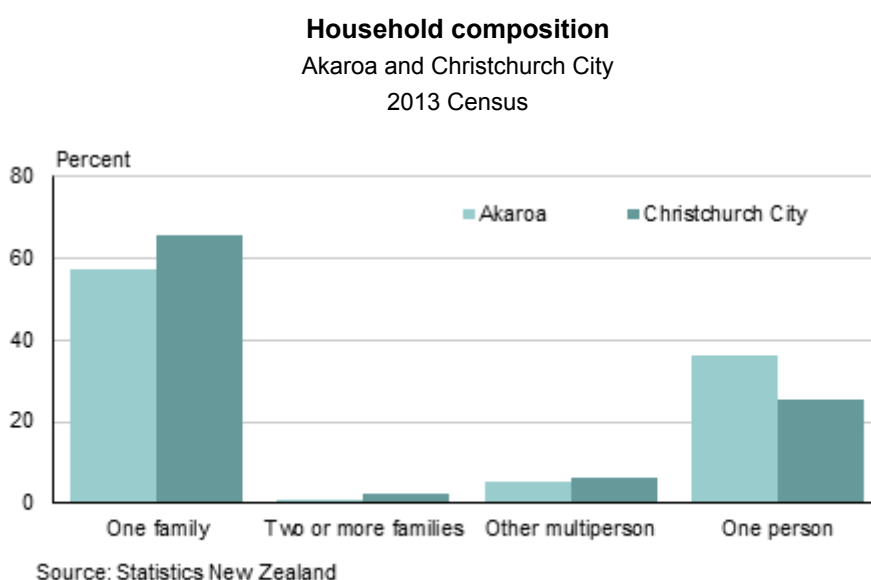
Some percentages may be too small to show on graph.

This data has been randomly rounded to protect confidentiality. Individual figures may not add up to totals, and values for the same data may vary in different text, tables, and graphs. For areas with small populations, the data may not look as expected because of this rounding.

Households

Household composition

- One-family households make up 57.9 percent of all households in Akaroa. For Christchurch City as a whole, one-family households make up 65.6 percent of all households.
- In Akaroa, there are 105 one-person households making up 36.8 percent of all households. In Christchurch City, one-person households make up 25.6 percent of all households.
- The average household size in Akaroa is 2.0 people, compared with an average of 2.5 people per household for all of Christchurch City.



Note: All figures are for households in occupied private dwellings.

Some percentages may be too small to show on graph.

This data has been randomly rounded to protect confidentiality. Individual figures may not add up to totals, and values for the same data may vary in different text, tables, and graphs. For areas with small populations, the data may not look as expected because of this rounding.

Phone, fax, and Internet

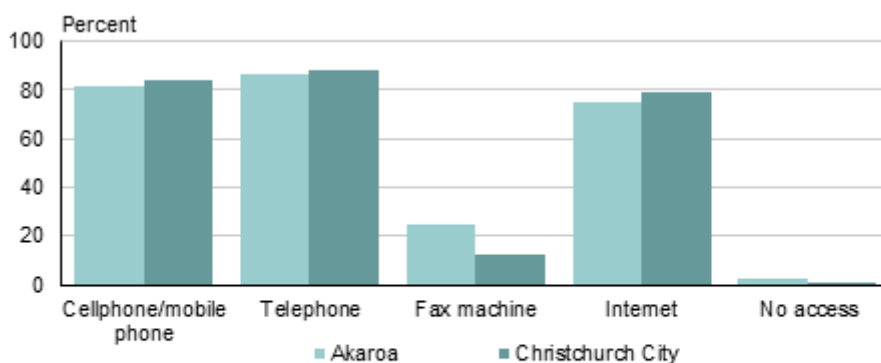
Access to phones, fax machines, and Internet

- 75.3 percent of households in Akaroa have access to the Internet, compared with 79.2 percent of households in Christchurch City.
- In Akaroa, 81.7 percent of households have access to a cellphone, compared with 84.2 percent of households for Christchurch City as a whole.

Access to phones, fax machines, and Internet

Akaroa and Christchurch City

2013 Census



Note: Households can access more than one type of telecommunication device. Therefore percentages do not add up to 100.

Source: Statistics New Zealand

Note: All figures are for households in occupied private dwellings.

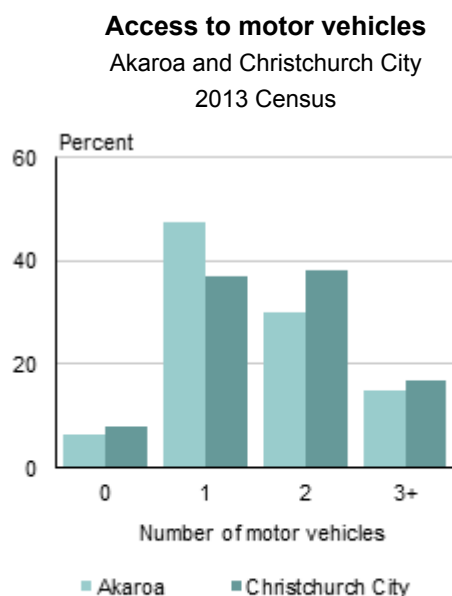
Some percentages may be too small to show on graph.

This data has been randomly rounded to protect confidentiality. Individual figures may not add up to totals, and values for the same data may vary in different text, tables and graphs. For areas with small populations, the data may not look as expected because of this rounding.

Transport

Access to motor vehicles

- 15.1 percent of households in Akaroa have access to three or more motor vehicles, compared with 16.9 percent of all households in Christchurch City.



Note: Some percentages may be too small to show on graph.
Source: Statistics New Zealand

Note: All figures are for households in occupied private dwellings.

Some percentages may be too small to show on graph.

Main means of travel to work

- The most common means of travel to work on census day for people in Akaroa was driving a private car, truck or van (43.8 percent of people who travelled to work used this form of transport).
- This was followed by walking or jogging (30.1 percent) and driving a company car, truck or van (17.8 percent).
- For Christchurch City as a whole, the most common means of travel to work was driving a private car, truck or van, followed by driving a company car, truck or van and bicycle.

Note: All figures are for the census usually resident population count.

This data has been randomly rounded to protect confidentiality. Individual figures may not add up to totals, and values for the same data may vary in different text, tables, and graphs. For areas with small populations, the data may not look as expected because of this rounding.

Housing

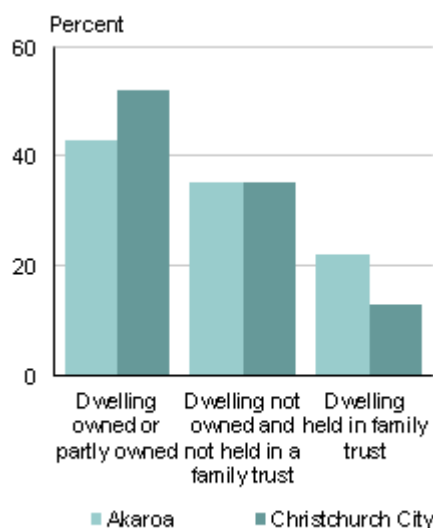
Home ownership

- In Akaroa, 63.7 percent of households in occupied private dwellings owned the dwelling or held it in a family trust.
- For Christchurch City as a whole, 64.8 percent of households in occupied private dwellings owned the dwelling or held it in a family trust.
- For households in Akaroa who rented the dwelling that they lived in, the median weekly rent paid was \$230. This compared with \$300 for Christchurch City.

Home ownership by household

Akaroa and Christchurch City

2013 Census



Source: Statistics New Zealand

Note: All figures are for households in occupied private dwellings.

Some percentages may be too small to show on graph.

This data has been randomly rounded to protect confidentiality. Individual figures may not add up to totals, and values for the same data may vary in different text, tables and graphs. For areas with small populations, the data may not look as expected because of this rounding.

Building consents

Building consent data for the year ended December 2013 showed that:

- The total number of building consents issued for dwellings, including apartments, in Akaroa was 1.
- The total number of building consents issued for apartments in Akaroa was 0.
- The total value of residential building work in Akaroa was \$2,154,630.
- The total value of non-residential building work in Akaroa was \$265,000.

Note: Building consent data is obtained from all accredited building consent authorities (ie territorial authorities) and is compiled if the building consent issued is valued over \$5000. See data quality information on building consents.

Business

Business demographics

Business demographic data for the year ended February 2013 showed that:

- There were 150 business locations (geographic units) in Akaroa compared with 37,434 for all of Christchurch City. This is a decrease of 4.5 percent from the year ended February 2006 for Akaroa.
- There were 460 paid employees in Akaroa compared with 186,880 for all of Christchurch City. This is an increase of 9.5 percent from the year ended February 2006 for Akaroa.

Top five industries in Akaroa				
By employee count				
For year ended February 2013				
Industry (ANZSIC06) ⁽¹⁾	Akaroa		Christchurch City	
	Employee count	Percent of total employee count	Employee Count	Percent of total employee count
Accommodation and food services	190	41.3	11,350	6.1
Retail trade	80	17.4	19,960	10.7
Construction	40	8.7	19,030	10.2
Transport, postal and warehousing	35	7.6	9,080	4.9
Education and training	30	6.5	14,660	7.8

1. Australian and New Zealand Standard Industrial Classification 2006 (ANZSIC06 V1.0).

Note: Table may not show five industries as not all area units have five industries within their boundaries.

Some area units may have more than one industry with the same employee count but the table has been restricted to five industries.

Source: Statistics New Zealand

Note: Business demographic data is sourced from a register of economically significant businesses which is maintained by Statistics New Zealand. See data quality information on business demographics.

Employee count data has been randomly rounded. Individual figures may not add up to totals, and values for the same data may vary in different text, tables and graphs. For areas with small populations, the data may not look as expected because of this rounding.