

## International Travel and Migration: October 2017

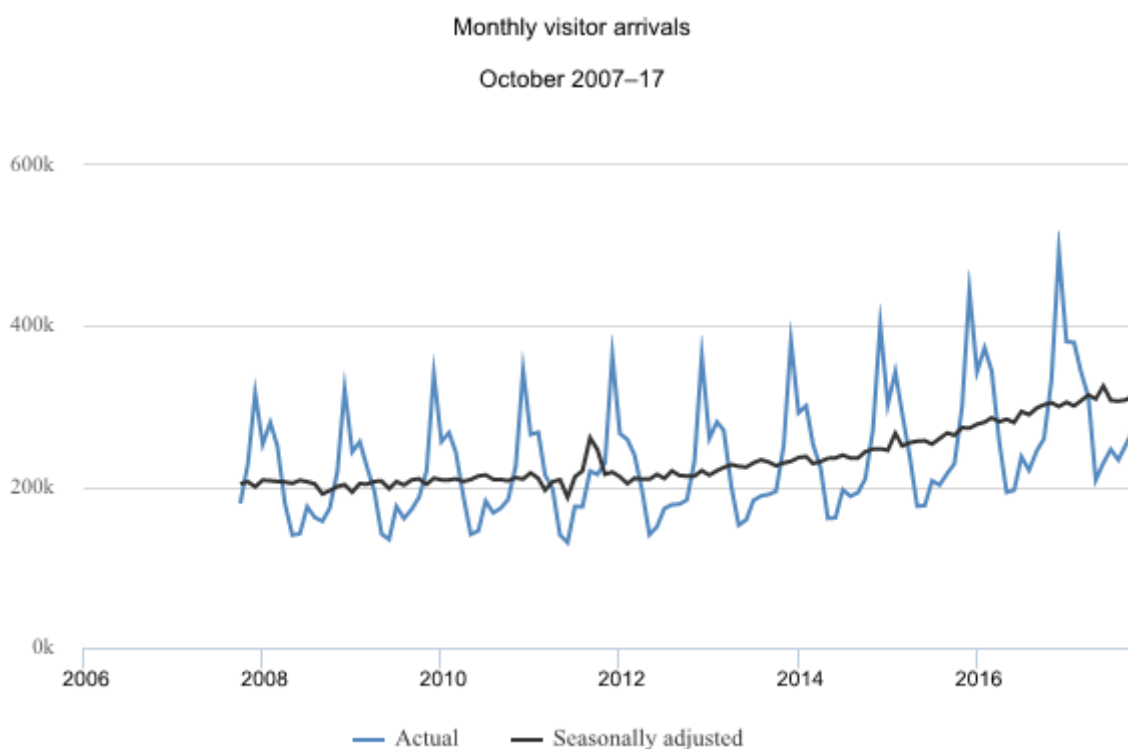
Embargoed until 10:45am – 22 November 2017

### Key facts

In October 2017 compared with October 2016 visitor arrivals were up 10,300 to 270,500.

The biggest changes were in arrivals from:

- China (up 3,700)
- Australia (down 3,100)
- Republic of Korea (up 3,100).



Source: Stats NZ

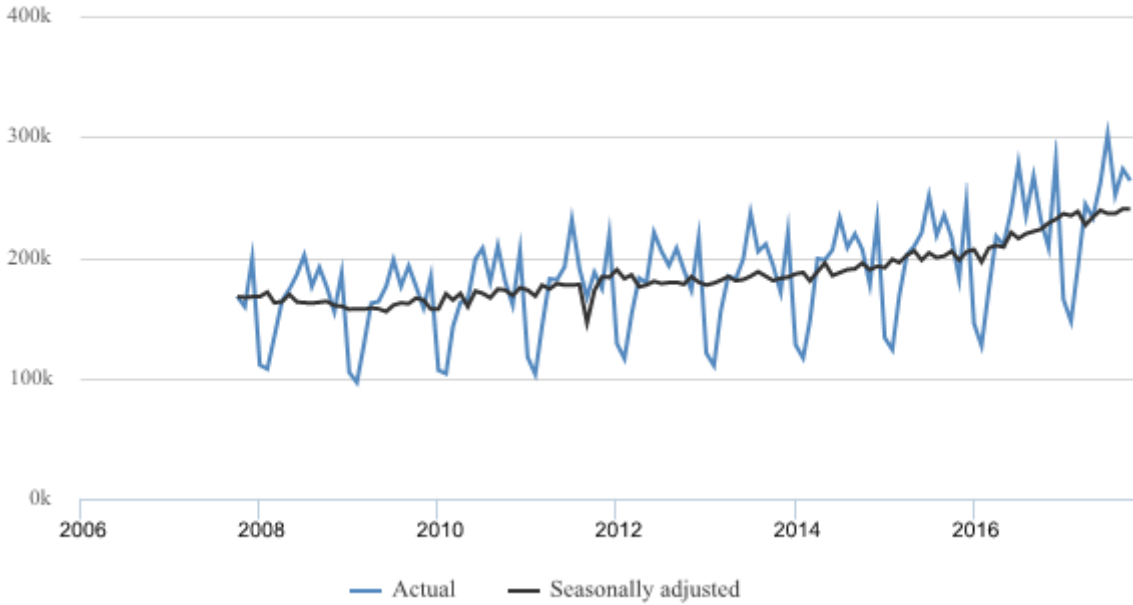
Overseas trips by New Zealand residents were up 32,800 to 263,900.

The biggest changes were in departures to:

- Australia (up 8,200)
- Fiji (up 7,900)
- China (up 2,600)
- Thailand (up 1,500).

Monthly overseas trips by New Zealand residents

October 2007–17



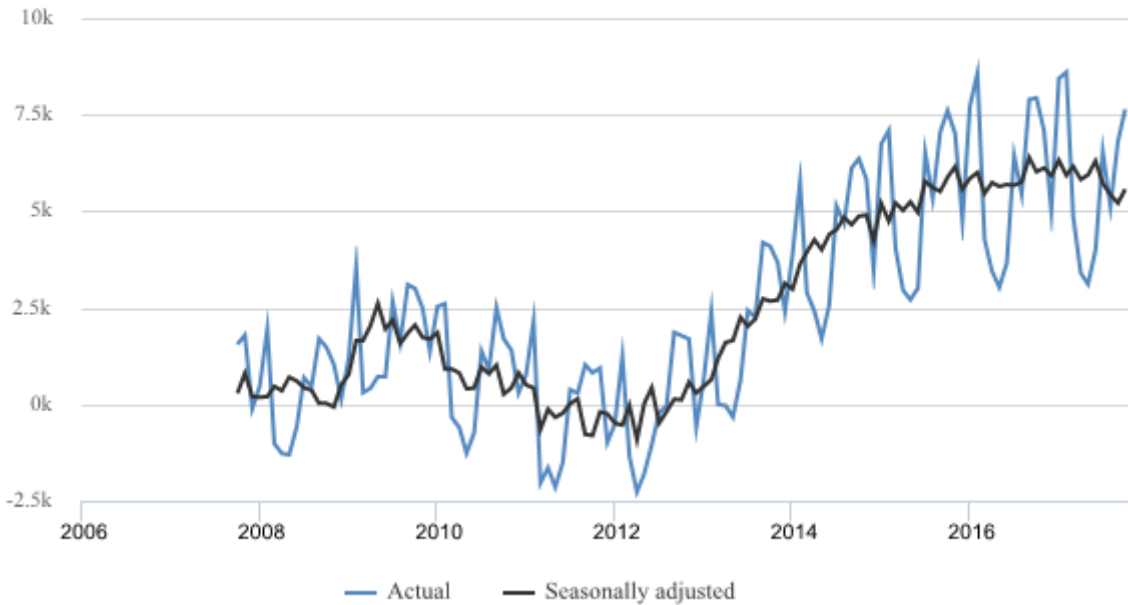
Source: Stats NZ

Permanent and long-term arrivals were relatively unchanged at 11,700.

Permanent and long-term departures were up 300 to 4,100.

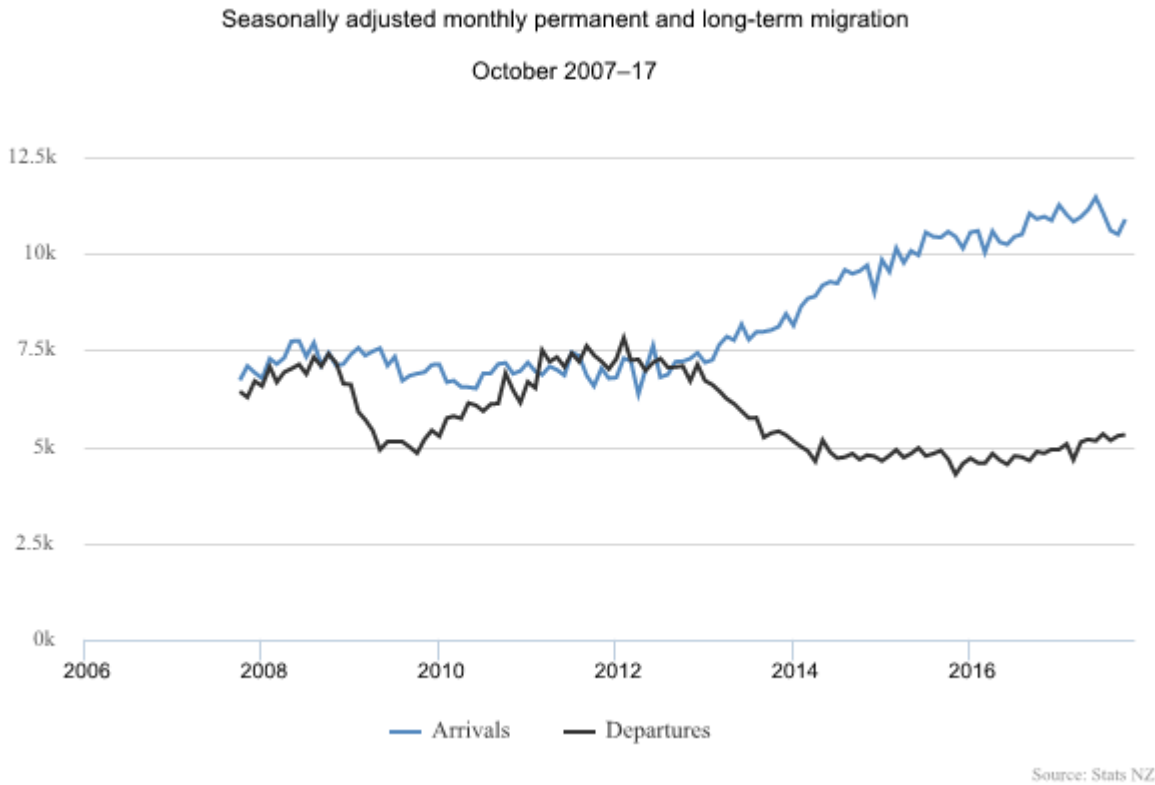
Monthly net permanent and long-term migration

October 2007–17



Source: Stats NZ

Seasonally adjusted figures showed a net gain of 5,600 migrants.



In the October 2017 year compared with the October 2016 year:

- visitor arrivals numbered 3.69 million, up 270,500 (8 percent)
- New Zealand residents departed on 2.83 million trips overseas, up 271,800 (11 percent)
- permanent and long-term arrivals were 131,600, up 5,500 (4 percent)
- permanent and long-term departures were 61,000, up 5,100 (9 percent)
- the net gain in migrants was 70,700, up 400.

## Outcomes-based measure of migration

In May 2017, Stats NZ introduced a new measure of migration, known as the 12/16-month rule, that identifies an individual's migrant status after we observe their travel history and their length of stay in New Zealand over a 16-month follow-up period. This measure provides a clearer picture of migration patterns in New Zealand, and is compatible with the Australian measure of migration.

The traditional method of classifying permanent and long-term (PLT) migrants relies on arrival and departure cards, using passengers' stated intention on the cards to determine their migrant status. If a passenger states they intend to stay in New Zealand for a year or more, they are classified as a migrant.

In the year ended June 2016, net migration as defined by the outcomes-based migration measure was 65,100, compared with 69,100 as defined by the permanent and long-term (PLT) migration measure. June 2016 is the most recently available period for outcomes-based migration due to the 17-month lag in producing migration figures by the 12/16-month rule.

*International Travel and Migration: October 2017* is the first release to include the regular outcomes-based migration series.

For more information on the 12/16-month rule, see:

- [Defining migrants using travel histories and the '12/16-month rule'](#)
- [Outcomes versus intentions: Measuring migration based on travel histories](#)

Outcomes-based migration data can be accessed from [Infoshare](#):

Subject category: **Tourism**

Group: **International Travel and Migration**

See also:

- [Annual net migration remains high in October](#) – media release
- [Australians boost record visitors](#) – media release

Liz MacPherson, Government Statistician

ISSN 1179-0407

22 November 2017

## Related links

### Next release

*International Travel and Migration: November 2017* will be released on 20 December 2017.

[Subscribe to information releases](#), including this one, by completing the online subscription form. You can also subscribe to receive International Visitor Arrivals to New Zealand, and our weekly provisional international travel statistics.

[The release calendar](#) lists all information releases by date of release.

### Past releases

[International Travel and Migration](#) has links to past releases.

### Data quality

#### **[International Travel and Migration – DataInfo+](#)**

General methodology used to produce international travel and migration statistics.

#### **[International Travel and Migration concepts – DataInfo+](#)**

Definitions of terms used in this release.

#### **[Principles and protocols for producers of Tier 1 statistics](#)**

Statistics in this release are produced in accordance with the Official Statistics System principles and protocols for producers of Tier 1 statistics for quality. They conform to the Statistics NZ Methodological Standard for Reporting of Data Quality.

### Related information

[International travel and migration articles](#) are occasional publications that provide analyses of selected topics.

### Information about international travel

[International Visitor Arrivals to New Zealand](#) contains detailed tables about the number and characteristics of visitor arrivals. It is released two working days after each International Travel and Migration information release.

[Provisional international travel statistics](#) provide the latest weekly and four-weekly figures for visitor arrivals and New Zealand-resident traveller departures, including figures for 10 major source and destination countries. These are released weekly, usually at 2pm on a Friday.

Stats NZ's [Tourism](#) web page lists tourism-related data sources, such as the Accommodation Survey and the Tourism Satellite Account.

[Tourism research and data](#) from the Ministry of Business, Innovation and Employment includes results from the International Visitor Survey, Domestic Travel Survey, and tourism forecasts.

Tourism New Zealand provides guides to New Zealand's key tourism markets, which include the outlook for future months.

Cruise New Zealand data has figures on cruise ship visits and cruise passengers. This includes passengers considered to be 'in transit' by the Immigration Act 2009, who are not included in international travel and migration statistics.

### **Information about international migration**

Stats NZ's Migration web page lists migration-related data sources, such as the Longitudinal Immigration Survey (2005–09).

Migration trends provides information from the Labour and Immigration Research Centre, part of the Ministry of Business, Innovation and Employment, which publishes research reports and information about the immigration research programme.

Immigration New Zealand statistics include application and approval numbers for the main immigration visa types.

### Copyright and terms of use

Includes our copyright, attribution, and liability statements.

## Contacts

**For media enquiries contact:**

Kim Dunstan  
Christchurch 03 964 8330  
James Weir  
Wellington 021 285 9191  
**Email:** [info@stats.govt.nz](mailto:info@stats.govt.nz)

**For technical information contact:**

Kirsten Nissen  
Christchurch 03 964 8788  
Joshua Fairless  
Christchurch 03 964 8814

**Email:** [info@stats.govt.nz](mailto:info@stats.govt.nz)

**For general enquiries contact our Information Centre:**

Phone: 0508 525 525 (toll-free in New Zealand)  
+64 4 931 4600 (outside New Zealand)  
**Email:** [info@stats.govt.nz](mailto:info@stats.govt.nz)

**Subscription service:**

Subscribe to information releases, including this one, by completing the online subscription form.

**Correction notifications:**

Subscribe to receive an email if a correction notice is published for International Travel and Migration.

Unsubscribe to correction notifications for International Travel and Migration.

Subscribe to all to receive an email if a correction notice is published for any of our information releases.

Unsubscribe to all if you change your mind.

## Tables

See the following Excel tables in the 'Downloads' box on this page. If you have problems viewing the files, see [opening files and PDFs](#).

1. International travel and migration, by direction and passenger type, actual counts
2. International travel and migration, by direction and passenger type, seasonally adjusted and trend series
3. Overseas visitor arrivals, by country of last permanent residence
4. Overseas visitor arrivals, by travel purpose and country of last permanent residence
5. New Zealand-resident traveller departures, by country of main destination
6. Permanent and long-term arrivals, by country of last permanent residence
7. Permanent and long-term departures, by country of next permanent residence
8. Net permanent and long-term migration, by country of last/next permanent residence
9. Permanent and long-term migration, by citizenship, actual counts
10. Permanent and long-term migration, by citizenship, seasonally adjusted series
11. Permanent and long-term migration, by New Zealand region
12. Permanent and long-term arrivals, by visa type and country of last permanent residence

## Access more data on Infoshare

Infoshare allows you to organise data in the way that best meets your needs. You can view the resulting tables onscreen or download them.

### Use Infoshare

For this release, select the following categories from the Infoshare homepage:

Subject category: **Tourism**

Group: **International Travel and Migration**

## Next release

*International Travel and Migration: November 2017* will be released on 20 December 2017.