



# Tatauranga 2013 Ngā Tauanga Tere

Mō te Māori





**Manatārua Karauna ©**

Kua raihanatia tēnei mahi i raro i te raihana Creative [Commons Attribution 3.0 New Zealand](#). E wātea ana koe ki te tārua, te horahora, me te whakahāngai i te rauemi, engari ko te mea kē me uapare te rauemi nei ki a Tatauranga Aotearoa, me te tautuku hoki ki ērā atu whakaritenga o te raihana. Me mōhio koe, kia kua e whakamahi i tētahi tohu, waitohu, tohu ōkawa rānei ka takahi ahakoa pēhea i te [Flags, Emblems, and Names Protection Act 1981](#). Whakamahia ngā kupu 'Tatauranga Aotearoa' i tō uaparenga, kua ko te waitohu a Tatauranga Aotearoa.

### **Taunaha**

Ahakoa te āta urupū a Tatauranga Aotearoa i tāna tukatuka, tātari me te kohika i ngā raraunga me ngā mōhiohio kei roto i tēnei whakaputanga, kāore e kī taurangi he mea hapa kore, ā, kāore he here i runga i a Tatauranga Aotearoa mō te ngaromanga, te tūkinotanga ka pā ki te tangata mā te whakamahinga horipū, tītaha rānei, o ngā mōhiohio kei roto i tēnei whakaputanga.

### **Kupu hautoa**

Tatauranga Aotearoa (2013). *Tatauranga 2013 Ngā Tauanga Tere mō te Māori*. Ka wātea i [www.stats.govt.nz](http://www.stats.govt.nz).

ISBN 978-0-478-40869-0 (tuihono)

I whakaputaina i Hakihea 2013 nā  
Tatauranga Aotearoa  
Te Whanganui-a-Tara, Aotearoa

### **Whakapā**

Pokapū Mōhiohio Tatauranga Aotearoa: [info@stats.govt.nz](mailto:info@stats.govt.nz)  
Waea koreutu 0508 525 525  
Waea i tāwāhi +64 4 931 4610  
[www.stats.govt.nz](http://www.stats.govt.nz)



# Ngā ihirangi

<b>1 Tatauranga 2013 Ngā Tauanga Tere mō te Māori .....</b>	<b>4</b>
Ka pēhea te Māori e tatauria ai i roto i te tatauranga .....	4
Tātai ōrautanga .....	4
<b>2 Taupori.....</b>	<b>5</b>
Kotahi te tangata i roto i te tokowhitu kei Aotearoa e noho ana he Māori tōna matawaka.....	5
Kotahi hautoru o ngā tāngata he kāwai Māori tō rātou kei raro i te 15 tau .....	6
Ko Ngāpuhi tonu te iwi tino nui rawa .....	6
<b>3 Pakeke me te ira tangata .....</b>	<b>8</b>
He rōpū taupori pūhou te Māori.....	8
Kei Te Tai Tokerau te wāhanga tino nui rawa o ngā Māori e 65 neke atu rānei ngā tau	8
<b>4 Tauwāhi .....</b>	<b>10</b>
Tata ki te hauwhā o ngā Māori katoa e noho ana i te rohe o Tāmaki Makaurau.....	10
<b>5 Reo Māori .....</b>	<b>11</b>
Ka taea e neke atu i te haurima o te taupori Māori te kōrerorero i roto i te reo Māori..	11
Ka taea e te kotahi i roto i te tokorima o ngā tāngata Māori te kōrero i roto i ētahi reo neke atu i te kotahi.....	11
<b>6 Mātauranga.....</b>	<b>13</b>
Kua piki haere te tokomaha o ngā Māori kua whiwhi tohu paetahi, tohu teitei ake rānei	13
Kua heke haere te tokomaha o ngā Māori kāore anō kia whiwhi tohu ōkawa.....	13
Tērā tonu pea ka kaha atu te whai wāhi a te hunga wāhine Māori ki ngā mahi ako i tā te hunga tāne Māori.....	14
<b>7 Mahi me te moni whiwhi .....</b>	<b>15</b>
Ko Te Tai Poutini te rohe e tino nui ai tā te Māori whiwhinga mahi .....	15
Ko ngā umanga e tino kitea ai te Māori ko te umanga ihu oneone me te umanga ngaio	15
He teitei ake te tau waenga o te moni whiwhi a te tāne Māori i tā te wahine Māori .....	17
<b>8 Tokomaha o ngā tamariki i whānau .....</b>	<b>18</b>
Kua heke haere te tokomaha o ngā wāhine Māori i whakawhānau i te tamaiti kotahi, neke atu rānei .....	18
Kāore te hautoru pea o ngā wāhine Māori i whakawhānau .....	18
<b>Ētahi atu mōhiohio .....</b>	<b>19</b>
<b>He rārangi o ngā tūtohi e wātea ana.....</b>	<b>20</b>



# 1 Tatauranga 2013 Ngā Tauanga Tere mō te Māori

Ka whakarato *Tatauranga 2013 Ngā Tauanga Tere mō te Māori* i ngā meka whaitake ki a koe mō ngā tāngata Māori e noho ana i Aotearoa, ka whakaatu hoki i ngā panoni ki te ora o taua rōpū matawaka mai i te tau 2006. Rapua he mōhiohio mō te:

- taupori
- pakeke me te ira tangata
- tauwāhi
- reo Māori
- mātauranga
- mahi me te moni whiwhi
- tokomaha o ngā tamariki i whānau.

Kua ahu mai ngā mōhiohio katoa i tēnei pūrongo i te tatau o ngā kainoho e noho ana i Aotearoa mō te nuinga o te wā mai i te Tatauranga o ngā Tāngata Huri Noa i Aotearoa me ō Rātou Whare Noho, i tū i te 5 o Poutū-te-rangi 2013. Ka mahue ngā kainoho o Aotearoa e tāwāhi ana i te pō tatauranga.

Nā te mea i whakakāhoretia te Tatauranga 2011 i muri i te rū whenua o Waitaha i te 22 o Hui-tanguru 2011 e whitu tau te houanga i waenga i tēnei tatauranga me tērā o mua. Ka nui ake pea ngā panoni i ngā raraunga i waenga i te tau 2006 me te tau 2013 i ērā e kitea ana i te houanga tau rima noa i waenga i ngā tatauranga. Kia tūpato ina whakatairite i ngā ia.

## Ka pēhea te Māori e tatauria ai i roto i te tatauranga

E rua ngā momo tatau i te Māori i roto i te Tatauranga o ngā Tāngata Huri Noa i Aotearoa me ō Rātou Whare Noho: mā te matawaka ka tahi, mā te kāwai Māori ka rua. Ka kapi aua inenga e rua i tēnei whakaputanga. He ariā rerekē te matawaka Māori me te kāwai Māori – ka kōrero te matawaka mō te tuakiri ahurea, ka kōrero te kāwai mō te whakapapa.

Ka whai wāhi ki te taupori matawaka Māori ko ērā i kī he Māori anake rātou, me ērā i kī ko te Māori tētahi o ō rātou matawaka.

Kei te hāngai tēnei mea te kāwai Māori ki ērā he uri rātou nō tētahi tangata Māori nō Aotearoa. Kei te noho ngā tatau i te kāwai Māori hei pūtake o ngā tauanga iwi.

I te tau 2013:

- e 598,605 ngā tāngata i kī he Māori tō rātou rōpū matawaka
- e 643,724 ngā tāngata i kī he kāwai Māori tō rātou.

## Tātai ōrautanga

Ki te kore i kīia i wāhi kē, ka katia i ngā ōrautanga me ngā ōwehenga katoa ngā urupare i kore e taea te whakarōpū (hei tauira, 'kāore i kīia', 'kāore i taea te urupare te tautuhi', 'kei waho te urupare i te hōkaitanga'.)

Kua whakaawhiwhi matapōkeretia ngā raraunga i tēnei pūrongo hei tiaki matatupu. Kāore pea e taea te tāpiripiri tau takitahi kia puta he tapeke tauoti, ā, ka rerekē pea ngā raraunga ōrite i ngā tūtohi rerekē.

## 2 Taupori

Kua kapi te taupori matawaka me ngā tāngata he kāwai Māori tō rātou i ngā mōhiohio taupori. Kei te whakaatu te tūtohi e whai ake ana i te tokomaha i kī he Māori tō rātou matawaka, te tokomaha i kī he kāwai Māori tō rātou, ngā rōpū e rua rānei.

### Ngā taupori matawaka Māori, kāwai Māori hoki

Tatauranga 2013

	Kāwai Māori	Kāore he kāwai Māori
Matawaka Māori	561,333	4,212
Kāore he matawaka Māori	107,391	3,061,275

**Tuhipoka:** Mō ngā tāngata i kī he kāwai Māori tō rātou, kāore ō rātou kāwai Māori, he Māori tō rātou matawaka hoki/rānei ngā tatau.

**Pūtake:** Tatauranga Aotearoa

### Kotahi te tangata i roto i te tokowhitu kei Aotearoa e noho ana he Māori tōna matawaka

- Kotahi te tangata i roto i te tokowhitu (e 598,605, 14.9 ōrau rānei) e noho ana i Aotearoa mō te nuinga o te wā i te tau 2013 nō te rōpū matawaka Māori – e 5.9 ōrau te pikinga mai i te 2006.
- O te taupori matawaka Māori i te tau 2013, e 98.2 ōrau i whānau i Aotearoa, 1.8 ōrau i whānau i tāwāhi.
- Kua piki te taupori matawaka Māori mā t e 163,758 tāngata (tata ki te 40 ōrau) i ēnei tau e 22 kua hipa, mai i te 434,847 i te 1991 ki te 598,605i te tau 2013.

### Taupori matawaka Māori

Ngā Tatauranga 1991–2013

Tatauranga	Taupori matawaka Māori	
	Tokomaha	Panoni ōrautanga
1991	434,847	...
1996	523,371	20.4
2001	526,281	0.6
2006	565,329	7.4
2013	598,605	5.9

**Tohu:** ... kāore i te hāngai

**Pūtake:** Tatauranga Aotearoa

He mea tautuhi e tata ki te haurua o ngā tāngata katoa i te rōpū matawaka Māori (e 278,196, e 46.5ōrau rānei) he Māori anake tō rātou matawaka. He hekenga tēnei mai i te 52.8 ōrau i te tau 2006.

Mō ērā tāngata nō te rōpū matawaka Māori i kī ehara te Māori i tō rātou matawaka anake:

- He mea tautuhi e te 273,192 (45.6 ōrau) te matawaka Māori me tētahi atu matawaka.

- He mea tautuhi e te 38,079 (6.4 ōrau) te matawaka Māori me ētahi atu matawaka e rua.
- He mea tautuhi e te 9,138 (1.5 ōrau) te matawaka Māori me ētahi atu matawaka e toru neke atu rānei.

## Kotahi hautoru o ngā tāngata he kāwai Māori tō rātou kei raro i te 15 tau

- I te tau 2013 e 668,724 ngā tāngata (17.5 ōrau) e noho ana i Aotearoa mō te nuinga o te wā he kāwai Māori tō rātou – e 3.8 ōrau te pikinga mai i te 2006.
- O te taupori matawaka Māori, e 97.9 ōrau i whānau i Aotearoa, ā, 2.1 ōrau i whānau i tāwāhi.
- Kei raro i te 15 ngā tau tōna kotahi hautoru (e 33.1 ōrau) o ngā tāngata he kāwai Māori tō rātou, mō te 5.6 ōrau kē e 65 neke atu rānei o rātou tau.

### Taupori kāwai Māori

Ngā Tatauranga 1991–2013

Tatauranga	Taupori kāwai Māori	
	Tokomaha	Panoni ōrautanga
1991	511,278	...
1996	579,714	13.4
2001	604,110	4.2
2006	643,977	6.6
2013	668,724	3.8

**Tohu:** ... kāore i te hāngai  
**Pūtake:** Tatauranga Aotearoa

## Ko Ngāpuhi tonu te iwi tino nui rawa

- I te tau 2013, ko Ngāpuhi te iwi tino nui mō ngā tāngata he kāwai Māori tō rātou, 125,601 ōna tāngata. Mai i te tau 2006, kua piki te tokomaha o rātou he Māori tō rātou kāwai e kī ana nō Ngāpuhi mā te 3,390 ngā tāngata (2.8 ōrau).
- Ko te iwi e tuarua ana te nui i te tau 2013 mō ngā tāngata he kāwai Māori tō rātou ko Ngāti Porou, me te 71,049 ngā tāngata – he hekenga 1.2 ōrau mai i te tau 2006.
- Mō te Waipounamu, ko Ngāi Tahu te iwi tino nui rawa, me te tatao o te 54,819 tāngata he kāwai Māori tō rātou. Kei te whakataurite tēnei ki te 49,185 tāngata i te tau 2006. Ko Ngāi Tahu te iwi e tuatoru ana te rahi i te tau 2013.
- Kāore 110,928 ngā tāngata he kāwai Māori tō rātou i mōhio ki ō rātou iwi. He pikinga 8.4 ōrau tēnei ina whakatauritea ki te tau 2006, he hekenga 0.8 ōrau anō hoki ina whakatauritea ki te tau 2001.

**Ngā iwi rahi rawa tekau i te 2013**  
**Ngā Tatauranga 2006 me te 2013**

Iwi <sup>(1)</sup>	Taupori ā-iwi		
	Tatauranga 2006	Tatauranga 2013	Panoni ōrautanga
Ngāpuhi	122,211	125,601	2.8
Ngāti Porou	71,910	71,049	-1.2
Ngāi Tahu	49,185	54,819	11.5
Waikato	33,429	40,083	19.9
Ngāti Tūwharetoa	34,674	35,874	3.5
Ngāti Maniapoto	33,627	35,358	5.1
Tūhoe	32,670	34,890	6.8
Ngāti Kahungunu ki Te Wairoa	20,982	21,060	0.4
Te Arawa	23,316	19,719	-15.4
Ngāti Kahungunu, kāore i kīia te rohe	18,459	18,285	-0.9
Tapeke o ngā Māori i tautuhi ki tētahi iwi	810,846	845,664	4.6

1. I pūtakea mai i te [iwi classification](#) a Tatauranga Aotearoa

**Pūtake:** Tatauranga Aotearoa



## 3 Pakeke me te ira tangata

Kua kapi te taupori matawaka Māori i ngā mōhiohio pakeke me te ira tangata.

### He rōpū taupori pūhou te Māori

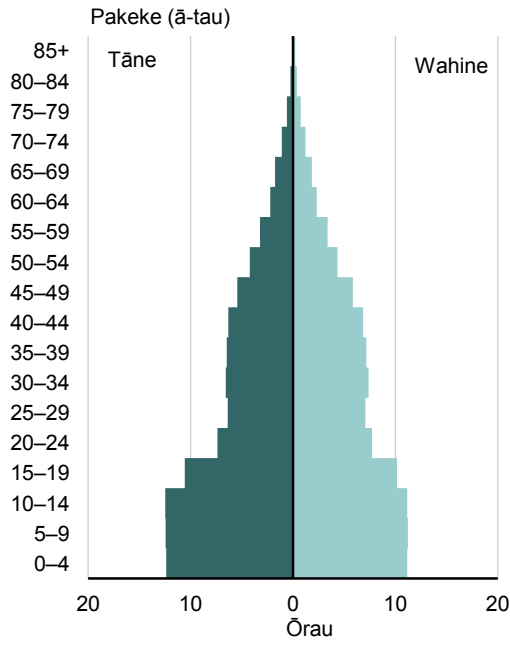
- E 23.9 tau te tau waenga o te taupori Māori (he pakeke ake tētahi haurua, he pūhou ake tētahi haurua i taua pakeke) i te Tatauranga 2013. Kei te whakataurite tēnei ki te 22.7 tau i te tau 2006.
- I te Tatauranga 2013 e 25.4 tau te tau waenga o te pakeke o ngā wāhine Māori, e 22.2 tau te tau waenga o te pakeke o ngā tāne Māori. Kei te whakataurite tēnei ki te 24.1 tau mō ngā wāhine me te 21.3 tau mō ngā tāne i te tau 2006.
- I te tau 2013, e 51.8 ōrau o te taupori Māori he wāhine, e 48.2 ōrau he tāne.
- Kua piki te ōwehenga o ngā Māori e 65 neke atu rānei ngā tau mai i te 4.1% i te tau 2006 ki te 5.4 ōrau i te tau 2013.
- I kitea te pikinga nui rawa i roto i te taupori Māori mai i te tau 2006 i te rōpū kaimahi taipakeke ake (e 30 ki te 64 ngā tau) me te 17,154 ngā tāngata, e 8.5 ōrau rānei, te pikinga ake i te tau 2006.
- Kei te piki haere tonu te tokomaha o te taupori Māori i raro i te 15 tau. Heoi anō, hei ōrau o te tapeke o te taupori Māori, kua heke atu i te 35.4 ōrau i te tau 2006 ki te 33.8 ōrau i te tau 2013.

### Kei Te Tai Tokerau te wāhanga tino nui rawa o ngā Māori e 65 neke atu rānei ngā tau

- I te tau 2013 i Te Tai Tokerau te wāhanga tino nui rawa o ngā Māori taipakeke atu, me te 7.7 ōrau e 65 neke atu rānei ō rātou tau. I te rohe o Te Taihū ki te Uru te wāhanga tino nui rawa o ngā Māori pūhou, me te 36.1 ōrau i raro i te 15 ō rātou tau.

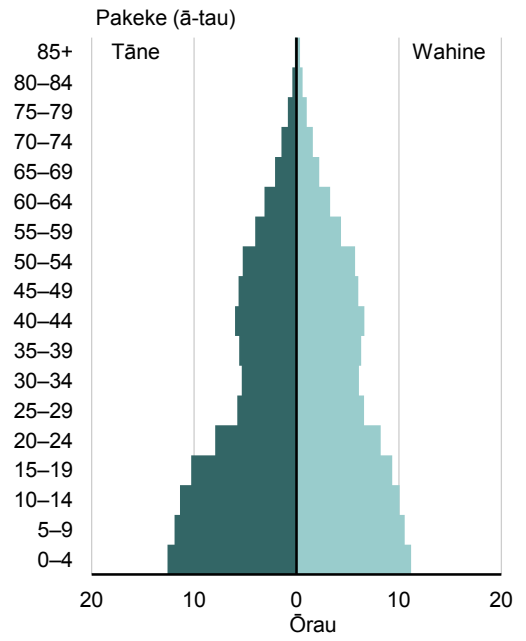


**Rōpū matawaka Māori**  
Mā te pakeke me te ira tangata  
Tatauranga 2006



Pūtake: Tatauranga Aotearoa

**Rōpū matawaka Māori**  
Mā te pakeke me te ira tangata  
Tatauranga 2013



Pūtake: Tatauranga Aotearoa

## 4 Tauwāhi

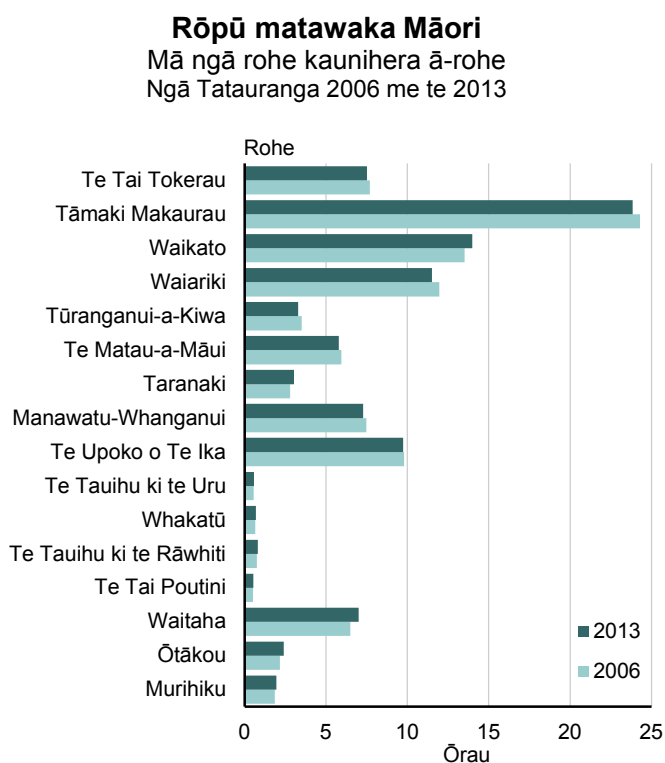
Kua kapi te taupori matawaka Māori i ngā mōhiohio tauwāhi.

### Tata ki te hauwhā o ngā Māori katoa e noho ana i te rohe o Tāmaki Makaurau

- I te tau 2013 e noho ana te nuinga o te taupori Māori (e 86.0 ōrau) i Te Ika-a-Māui, me te iti paku iho o te hauwhā (e 23.8 ōrau) i te rohe o Tāmaki Makaurau. He paku hekenga iho tēnei mai i te tau 2006 i noho ai e 87 ōrau o te taupori Māori i Te Ika-a-Māui, me te 24.3 ōrau i te rohe o Tāmaki Makaurau.
- E noho ana e 83,454 ngā Māori i Te Waipounamu i te tau 2013, he pikinga o te 14.0 ōrau (10,224 ngā tāngata) mai i te Tatauranga 2006.

I muri i Tāmaki Makaurau ko ngā wāhi kei reira ngā ōrau tino nui o te taupori Māori ko ēnei:

- Waikato (14.0 ōrau)
- Waiariki (11.5 ōrau)
- Te Upoko o Te Ika (e 9.7 ōrau)



Pūtake: Tatauranga Aotearoa

## 5 Reo Māori

Kua kapi te taupori matawaka Māori i ngā mōhiohio reo Māori.

### Ka taea e neke atu i te haurima o te taupori Māori te kōrerorero i roto i te reo Māori

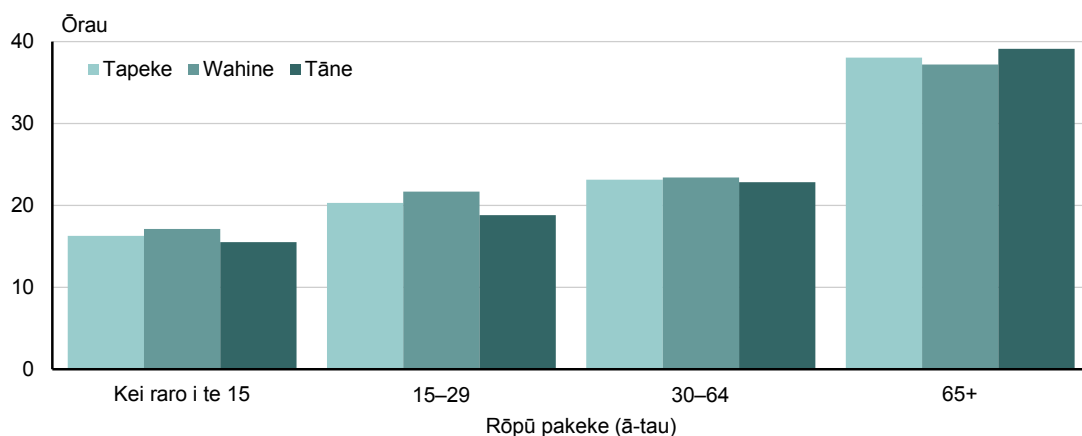
I te tau 2013 ka taea e te 125,352 ngā Māori (e 21.3 ōrau) te kōrero mō te maha o ngā mea o ia rā ki te reo Māori, e 4.8 te hekenga o tēnei mai i te Tatauranga 2006.

O ērā Māori e taea ana te kōrerorero i roto i te reo Māori i te tau 2013:

- e 26.3 ōrau i raro i te 15 ngā tau – e 6.2 ōrau te hekenga iho mai i te 2006
- e 23.3 ōrau i waenga i te 15 me te 29 ngā tau – e 8.2 ōrau te hekenga iho
- e 40.6 ōrau i waenga i te 30 me te 64 ngā tau – e 5.0 ōrau te hekenga iho
- e 9.8 ōrau e 65 neke atu rānei ngā tau – 11.0 ōrau te pikinga ake.

#### Ngā kaikōrero reo Māori hei ōwhenga o te taupori Māori

Mā te pakeke me te ira tangata  
Tatauranga 2013



Pūtake: Tatauranga Aotearoa

### Ka taea e te kotahi i roto i te tokorima o ngā tāngata Māori te kōrero i roto i ētahi reo neke atu i te kotahi

I te tau 2013, e kōrero ana 125,388 ngā tāngata Māori (e 21.3 ōrau) neke atu i te kotahi reo, he hekenga 4.9 ōrau tēnei mai i te 2006. O ērā Māori e kōrero ana neke i te kotahi reo i te tau 2013:

- e kōrero ana e 93.4 ōrau i ngā reo e rua
- e kōrero ana e 6.6 ōrau i ngā reo e toru neke atu rānei.

**Te maha o ngā reo e kōrerotia ana e te rōpū matawaka Māori**

Mā te pakeke

Tatauranga 2013

Pakeke (ā-tau)	Kotahi te reo	E rua ngā reo	E toru neke atu rānei ngā reo
	Ōrau		
Kei raro i te 15 tau	26.1	5.1	0.3
15–29	18.9	4.8	0.4
30–64	28.2	8.0	0.7
65+ ngā tau	3.3	1.9	0.1
Tapeke Māori	76.5	19.9	1.4
<b>Pūtake:</b> Tatauranga Aotearoa			

## 6 Mātauranga

Kua kapi te taupori matawaka Māori 15 neke atu rānei ngā tau i ngā mōhiohio mātauranga.

Ka whai wāhi ki ngā tohu ōkawa ko ngā tohu i whiwhi i te kura tuarua me te mātauranga tuatoru (arā, ngā tohu ahumahi me ngā tohu paetahi, teitei ake rānei).

Kei te ine te whai wāhitanga ako i ērā e haere ana, e ako ana, e whakaurutia ana ki te kura, ki wāhi kē atu rānei.

### Kua piki haere te tokomaha o ngā Māori kua whiwhi tohu paetahi, tohu teitei ake rānei

I te tau 2013, i kī ngā Māori e 36,072 ko te tohu paetahi, teitei ake rānei, tō rātou tohu teitei rawa ina whakatairitea ki te 23,070 i te tau 2006 (he pikinga e 56.4 ōrau).

I te tau 2013, i kī 12.3 ōrau o ngā wāhine Māori me te 7.4 ōrau o ngā tāne Māori ko te tohu paetahi, teitei ake rānei, tō rātou tohu teitei rawa. He pikinga tēnei o te 8.4 ōrau mō ngā wāhine me te 5.6 ōrau mō ngā tāne mai i te tau 2006. Mō ērā Māori i kī ko te tohu paetahi, teitei ake rānei, tō rātou tohu teitei rawa i te tau 2013:

- kua whai tohu paetahi e 75.0 ōrau
- kua whai tohu tāuru, paerua kairangi hoki 13.2 ōrau
- kua whai tohu paerua 10.0 ōrau
- kua whai tohu tākutatanga 1.8 ōrau.

### Kua heke haere te tokomaha o ngā Māori kāore anō kia whiwhi tohu ōkawa

- Kua heke haere te tokomaha o ngā Māori kāore anō kia whiwhi tohu ōkawa Kāore i te hautoru o ngā Māori (e 33.3 ōrau) 15 neke atu rānei o rātou tau he tohu ōkawa i te tau 2013, he hekenga mai i te 39.9 ōrau i te tau 2006.
- Ko te tikanga he iti iho te tūponotanga ka whai tohu ōkawa ngā tāne Māori i ngā wāhine Māori. I te tau 2013 kua whai tohu ōkawa e 63.2 ōrau o ngā tāne Māori ina whakatairitea ki te 69.8 ōrau o ngā wāhine Māori.

#### Te tohu teitei rawa mō ngā Māori 15 neke atu rānei ngā tau

Ngā Tatauranga 2006 me te 2013

Tohu tino teitei rawa	Tatauranga 2006		Tatauranga 2013	
	Tokomaha	Ōrau	Tokomaha	Ōrau
Kāore he tohu	130,146	40.0	119,544	33.4
Tiwhikete taumata 1–4	152,238	46.8	179,436	50.2
Tītohu taumata 5–6	19,563	6.0	22,461	6.3
Tohu paetahi, tohu teitei ake rānei	23,067	7.1	36,072	10.1
Tapeke Māori	325,014	...	357,513	...

**Tohu:** ... kāore i te hāngai  
**Pūtake:** Tatauranga Aotearoa

## Tērā tonu pea ka kaha atu te whai wāhi a te hunga wāhine Māori ki ngā mahi ako i tā te hunga tāne Māori

- I te tau 2013, e whai wāhi ana 19.6 ōrau o ngā Māori ki ngā akoranga ukiuki, tiriwā hoki/rānei. Kei te whakatairite tēnei ki te 20.1 ōrau i te tau 2006.
- Mō ngā Māori e whai wāhi ana ki ngā akoranga, e 41.0 ōrau he tāne, e 59.0 ōrau he wāhine.

## 7 Mahi me te moni whiwhi

Kua kapi te taupori matawaka Māori 15 neke atu rānei ngā tau i ngā mōhiohio mahi me te moni whiwhi.

### Ko Te Tai Poutini te rohe e tino nui ai tā te Māori whiwhinga mahi

- Hei ōwehenga o te taupori matawaka Māori 15 neke atu rānei ngā tau ko Te Tai Poutini te rohe i tino nui ai tā te Māori whiwhinga mahi, ko te 66.1 ōrau. Ko Te Tai Tokerau te rohe i tino iti ai tā te Māori whiwhinga mahi, ko te 48.8 ōrau.
- Ko te tikanga he nui ake te tūponotanga he mahi uikuki tā ngā tāne Māori i te tau 2013 i ngā wāhine Māori, e 52.9 ōrau ki te 35.1 ōrau.
- E 223,926 ngā tāngata Māori 15 neke atu rānei ngā tau e mahi ukiuki ana, e mahi tiriwā ana rānei, he paku hekenga atu o te 0.6 ōrau mai i te tau 2006.
- Kua piki te ōwehenga o te hunga kore mahi i te Taturanga 2013 ki te 15.6 ōrau, he pikinga mai i te 11.0 ōrau i te tau 2006.

### Te tūnga o te hunga mahi mō te rōpū matawaka Māori 15 neke atu rānei ngā tau Ngā Tatauranga 2006 me te 2013

Tūnga hunga mahi	Tatauranga 2006		Tatauranga 2013	
	Tokomaha	Ōrau	Tokomaha	Ōrau
Whai mahi ukiuki	175,545	48.0	172,116	43.4
Whai mahi tiriwā	49,812	13.6	51,810	13.1
Hunga kore mahi	27,876	7.6	41,295	10.4
Kāore i te whai wāhi ki te hunga mahi	112,173	30.7	131,070	33.1
Tapeke Māori	365,406	...	396,285	...
<b>Tohu:</b> ... kāore i te hāngai				
<b>Pūtake:</b> Tatauranga Aotearoa				

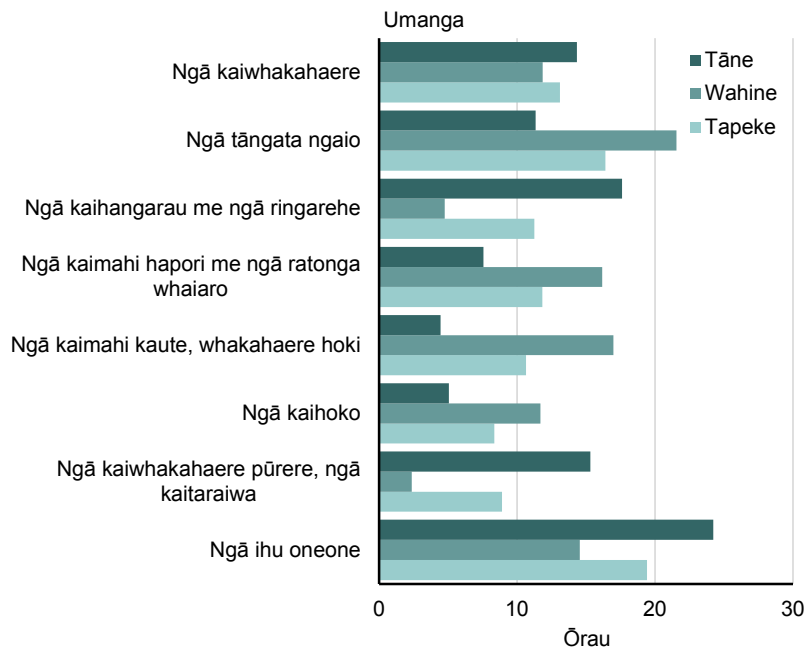
### Ko ngā umanga e tino kitea ai te Māori ko te umanga ihu oneone me te umanga ngaio

I te tau 2013 ko ngā umanga e tino kitea ai ngā Māori whai mahi 15 neke atu rānei ngā tau ko ngā umanga:

- ihu oneone (19.4 ōrau) – he hekenga mai i te 21.2 ōrau i te tau 2006.
- tangata ngaio (16.4 ōrau) – he pikinga mai i te 14.0 ōrau
- kaiwhakahaere (13.1 ōrau) – he pikinga mai i te 11.6 ōrau.

**Ngā rōpū mahi matua mō te rōpū matawaka Māori whai mahi 15 neke atu rānei ngā tau**

Mā te ira tangata  
Tatauranga 2013



Ko ngā ahumahi e kitea nuitia ai ngā Māori e mahi ana i te tau 2013 ko ēnei:

- te ahumahi whakanao (12.2 ōrau) – he hekenga mai i te 14.7 ōrau i te tau 2006.
- te ahumahi tiaki hauora me te āwhina pāpori (10.0 ōrau) – he pikinga mai i te 8.5 ōrau.
- te ahumahi mātauranga me te whakangungu (9.4 ōrau) – he pikinga mai i te 8.0 ōrau.

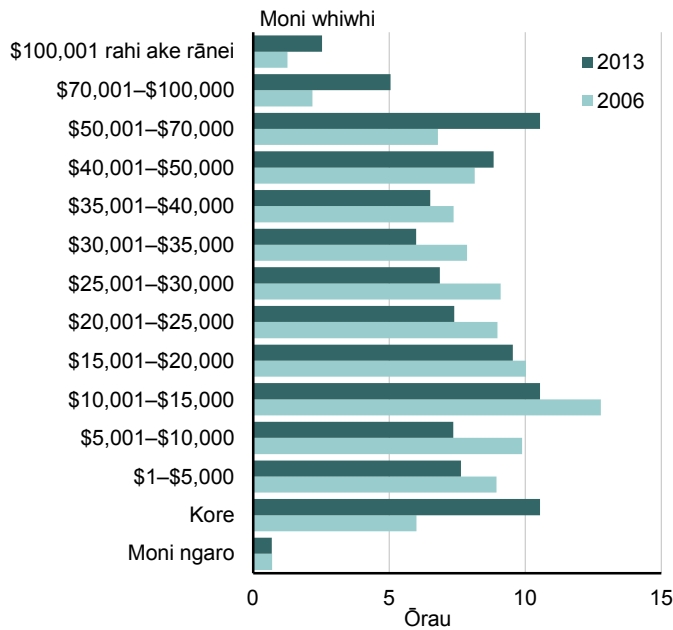


## He teitei ake te tau waenga o te moni whiwhi a te tāne Māori i tā te wahine Māori

- E \$27,200 te tau waenga o te moni whiwhi (i whiwhi tētahi haurua i te moni whiwhi rahi ake, i whiwhi tētahi haurua i te moni whiwhi iti iho, i taua rahinga) mō te tāne Māori 15 neke atu ngā tau, me te \$19,900 mō te wahine Māori.
- I te tau 2013, e \$22,500 te tau waenga o te moni whiwhi mō ngā Māori katoa 15 neke atu rānei ngā tau.

### Te tapeke moni whiwhi mō ngā Māori 15 neke atu rānei ngā tau

Ngā Tatauranga 2006 me te 2013



Pūtake: Tatauranga Aotearoa

## 8 Tokomaha o ngā tamariki i whānau

Kua kapi i ngā mōhiohio mō te tokomaha o ngā tamariki i whānau te taupori matawaka wāhine Māori 15 neke atu rānei ngā tau nā rātou i kī kua whakawhānau tamariki, kāore rānei.

### Kua heke haere te tokomaha o ngā wāhine Māori i whakawhānau i te tamaiti kotahi, neke atu rānei

- I te tau 2013, o ērā i whāki i te tokomaha o ngā tamariki i whakawhānau ai, i whakawhānau e 68.2 ōrau o ngā wāhine Māori i te kotahi neke atu rānei ngā tamariki, kei te whakatairite tēnei ki te 68.5 ōrau i te tau 2006.
- I te tau 2013, i whakawhānau e 20.6 ōrau o ngā wāhine Māori i te tokowhā neke atu rānei ngā tamariki. He paku hekenga tēnei mai i te 22.0 ōrau i te tau 2006.
- Ko te tikanga he nui ake te tūponotanga kua whakawhānau ngā wāhine Māori i whānau i Aotearoa i ngā wāhine Māori i whānau i tāwāhi i te tokowhā neke atu rānei ngā tamariki, e 20.7 ōrau ki te 8.4 ōrau.

### Kāore te hautoru pea o ngā wāhine Māori i whakawhānau

- I te tau 2013, o ērā i whāki i te tokomaha o ngā tamariki i whakawhānau ai, i paku piki te ōwehenga o ngā wāhine Māori kāore i whakawhānau i tētahi tamaiti ki te 31.8 ōrau, kei te whakatairite tēnei ki te 31.5 ōrau i te tau 2006.
- I te tau 2013 kāore anō 10.5 ōrau o ngā wāhine Māori e 45 neke atu rānei o rātou tau kia whakawhānau i tētahi tamaiti. He pikinga tēnei mai i te 9.2 ōrau i te tau 2006.
- I te tau 2013, e 4.3 ōrau o ngā wāhine Māori i whakautu i te pātai i tohu mai 'kua kaiponutia e rātou te whakautu. Kei te whakatairite tēnei ki te 4.6 ōrau i te tau 2006.



---

## Ētahi atu mōhiohio

- [Ētahi atu tauanga mō te Māori](#)
- [2013 Census data dictionary](#)
- [2013 Census definitions and forms](#)
- [Ētahi atu mōhiohio ma i te Tatauranga 2013](#)

**Mō ētahi mōhiohio anō, whakapā ki tō mātou Pokapū Mōhiohio:**

Īmēra: [info@stats.govt.nz](mailto:info@stats.govt.nz)

Waea: 0580 525 525 (he koreutu i roto i Aotearoa)

+64 4 931 4600 (mō waho i Aotearoa)

# He rārangi o ngā tūtohi e wātea ana

E wātea ana ēnei tūtohi i te hōputu Excel mai i te pouaka 'Ngā kōnae wātea'. Mēnā ka raru tō tiro tiro i ngā kōnae, tirohia [opening files and PDFs](#).

- 1 Whakarāpopotonga taupori matawaka Māori, 1991–2013
- 2 Rōpū pakeke me te ira tangata me te tau waenga, mō te rōpū matawaka Māori, 2001, 2006, me te 2013
- 3 Rōpū pakeke me te ira tangata i runga anō i ngā rohe kaunihera ā-rohe, mō te rōpū matawaka Māori, 2013
- 4 Rōpū pakeke me te ira tangata i runga anō i ngā rohe mana ā-rohe me ngā rohe poari ā-rohe o Tāmaki Makaurau, mō te rōpū matawaka Māori, 2013
- 5 Ngā rohe kaunihera ā-rohe, mō te rōpū matawaka Māori, 2001, 2006, me te 2013
- 6 Rohe mana ā-rohe me ngā rohe poari ā-rohe o Tāmaki Makaurau, mō te rōpū matawaka Māori, 2001, 2006, me te 2013
- 7 Rōpū matawaka (ngā tapeke whakautu tōpū), mō te rōpū matawaka Māori, 2001, 2006, me 2013
- 8 Reo kōrero (tapeke whakautu), mō te rōpū matawaka Māori, 2001, 2006, me te 2013
- 9 Reo kōrero (tapeke whakautu), mā te rōpū pakeke me te ira tangata, mō te rōpū matawaka Māori, 2013
- 10 Reo kōrero (tapeke whakautu), mā ngā rohe kaunihera ā-rohe, mō te rōpū matawaka Māori, 2013
- 11 Reo kōrero (tapeke whakautu), mā ngā rohe mana ā-rohe me ngā rohe poari ā-rohe o Tāmaki Makaurau, mō te rōpū matawaka Māori, 2013
- 12 Te maha o ngā reo e kōrerotia ana, mō te rōpū matawaka Māori, 2001, 2006, me te 2013
- 13 Whakaaturanga reo whai mana, mō te rōpū matawaka Māori, 2013
- 14 Whakaaturanga reo whai mana, i runga anō i ngā rohe kaunihera ā-rohe, mō te rōpū matawaka Māori, 2013
- 15 Whakaaturanga reo whai mana, i runga anō i ngā rohe mana ā-rohe me ngā rohe poari ā-rohe o Tāmaki Makaurau, mō te rōpū matawaka Māori, 2013
- 16 Te tokomaha o ngā tamariki i whānau ora, mō te rōpū wāhine matawaka Māori 15 neke atu rānei ngā tau, ngā Tatauranga 2006 me te 2013
- 17 Te tokomaha o ngā tamariki i whānau ora, i runga anō i ngā rohe kaunihera ā-rohe, mō te rōpū wāhine matawaka Māori 15 neke atu rānei ngā tau, Tatauranga 2013
- 18 Te tokomaha o ngā tamariki i whānau ora, i runga anō i ngā rohe mana ā-rohe me ngā rohe poari ā-rohe o Tāmaki Makaurau, mō te rōpū wāhine matawaka Māori 15 neke atu rānei ngā tau, Tatauranga 2013
- 19 Tohu teitei rawa, mō te rōpū matawaka Māori 15 neke atu rānei ngā tau, 2006 me te 2013
- 20 Tohu teitei rawa, i runga anō i te ira tangata me te rōpū pakeke, mō te rōpū matawaka Māori 15 neke atu rānei ngā tau, 2013
- 21 Tohu teitei rawa, i runga anō i ngā rohe kaunihera ā-rohe, mō te rōpū matawaka Māori 15 neke atu rānei ngā tau, 2013
- 22 Tohu teitei rawa, i runga anō i ngā rohe mana ā-rohe me ngā rohe poari ā-rohe o Tāmaki Makaurau, mō te rōpū matawaka Māori 15 neke atu rānei ngā tau, 2013
- 23 Whai wāhi ki ngā akoranga, i runga anō i te rōpū pakeke me te ira tangata, mō te rōpū matawaka Māori 15 neke atu rānei ngā tau, 2013
- 24 Tapeke moni whiwhi whaiaro, mō te rōpū matawaka Māori 15 neke atu rānei ngā tau, 2001, 2006 me te 2013

- 25 Tapeke moni whiwhi whaiaro, i runga anō i te rōpū pakeke me te ira tangata, mō te rōpū matawaka Māori 15 neke atu rānei ngā tau, 2013
- 26 Tapeke moni whiwhi whaiaro, i runga anō i ngā rohe kaunihera ā-rohe, mō te rōpū matawaka Māori 15 neke atu rānei ngā tau, 2013
- 27 Tapeke moni whiwhi whaiaro, i runga anō i ngā rohe mana ā-rohe me ngā rohe poari ā-rohe o Tāmaki Makaurau, mō te rōpū matawaka Māori 15 neke atu rānei ngā tau, 2013
- 28 Mahi me te tūnga hunga mahi, i runga anō i ngā rohe kaunihera ā-rohe, mō te rōpū matawaka Māori 15 neke atu rānei ngā tau, 2013
- 29 Mahi me te tūnga hunga mahi, i runga anō i ngā rohe mana ā-rohe me ngā rohe poari ā-rohe o Tāmaki Makaurau, mō te rōpū matawaka Māori 15 neke atu rānei ngā tau, 2013
- 30 Umanga (rōpū matua ANZSCO) me te mahi me te tūnga hunga mahi, mō te rōpū matawaka Māori whai mahi 15 neke atu rānei ngā tau, 2006 me te 2013
- 31 Umanga (rōpū matua ANZSCO), i runga anō i ngā rohe kaunihera ā-rohe, mō te rōpū matawaka Māori whai mahi 15 neke atu rānei ngā tau, 2013
- 32 Umanga (rōpū matua ANZSCO), i runga anō i ngā rohe mana ā-rohe me ngā rohe poari ā-rohe o Tāmaki Makaurau, mō te rōpū matawaka Māori whai mahi 15 neke atu rānei ngā tau, 2013
- 33 Ahumahi (wehenga ANZSIC06) me te mahi me te tūnga hunga mahi, mō te rōpū matawaka Māori whai mahi 15 neke atu rānei ngā tau, 2006 me te 2013
- 34 Whakarāpopotonga taupori kāwai Māori, 1858–2013
- 35 Ngā rohe kaunihera ā-rohe, mō te taupori kāwai Māori, 2001, 2006, me te 2013
- 36 Ngā rohe mana ā-rohe me ngā rohe poari ā-rohe o Tāmaki Makaurau, mō te taupori kāwai Māori, 2001, 2006, me te 2013
- 37 Whakaaturanga kāwai Māori, i runga anō i te rōpū pakeke me te ira tangata, 2006 me te 2013
- 38 Whakaaturanga kāwai Māori, i runga anō i te rōpū matawaka (ngā tapeke whakautu tōpū) me te ira tangata, 2013
- 39 Ngā iwi (ngā whakautu tapeke), mō te taupori kāwai Māori, 2001, 2006, me te 2013
- 40 Ngā iwi (ngā whakautu tapeke), i runga anō i te rōpū pakeke me te ira tangata, mō te taupori kāwai Māori, 2013
- 41 Ngā iwi (ngā whakautu tapeke), i runga anō i ngā rohe kaunihera ā-rohe, mō te taupori kāwai Māori, 2013
- 42 Ngā iwi i tautuhia, mō te taupori kāwai Māori, 2001, 2006, me te 2013