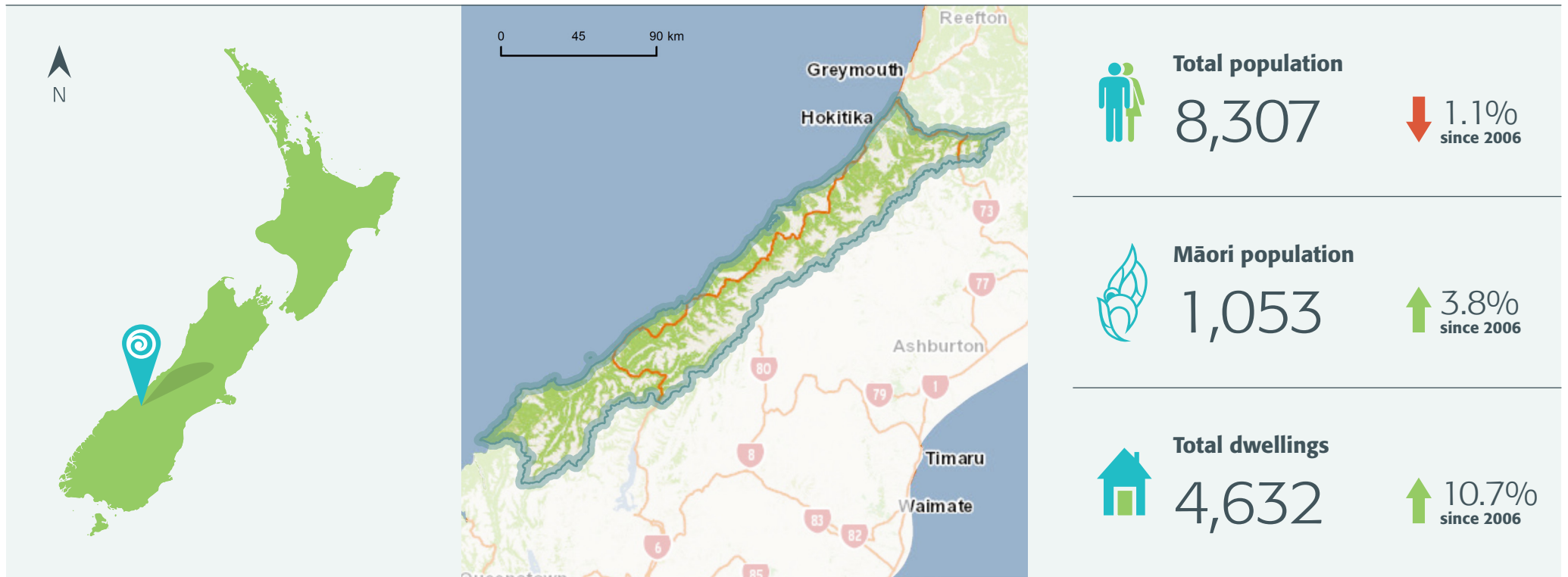
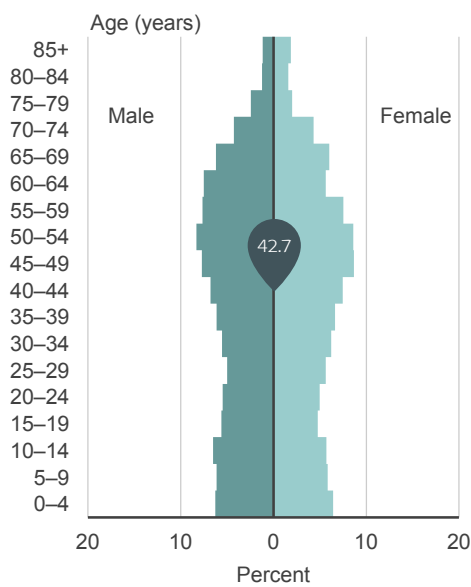


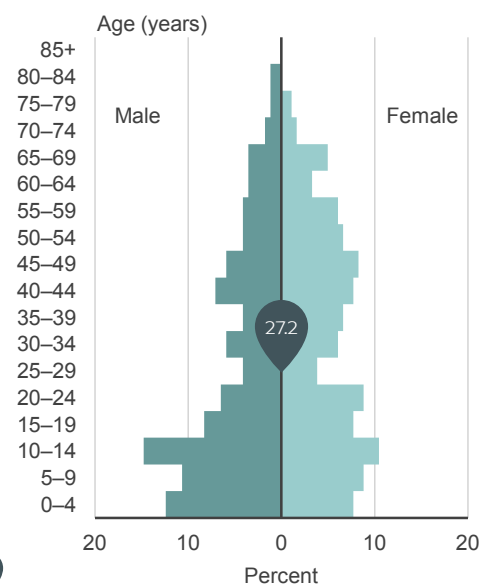
# QuickStats about Westland District



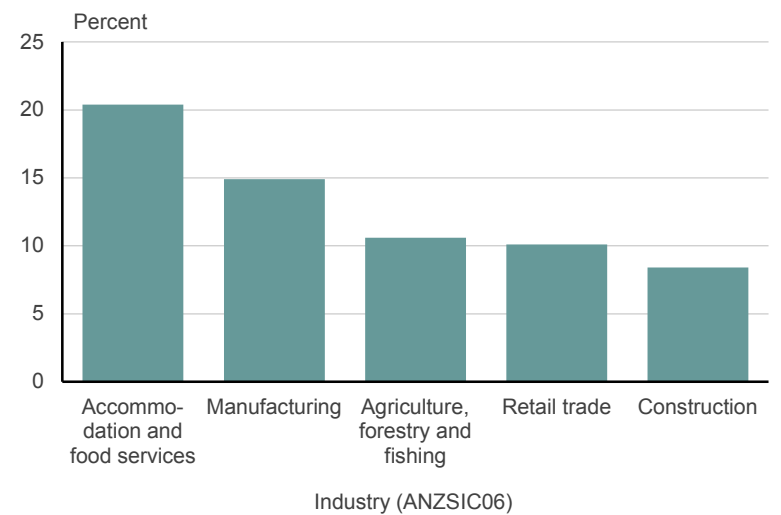
**Age and sex of people**  
Westland District  
2013 Census



**Age and sex of Māori**  
Westland District  
2013 Census



**Top five industries in Westland District**  
By employee count  
For year ended February 2013



## How Westland District compares with the national average

### Individuals

#### Major ethnic groups

	European	88.4%	vs	74.0%
	Māori	13.5%	vs	14.9%
	Pacific peoples	1.2%	vs	7.4%
	Asian	2.8%	vs	11.8%
	Middle Eastern/ Latin American/ African	0.5%	vs	1.2%
	Other	3.3%	vs	1.7%

#### Percent born overseas

12.3% vs 25.2%

#### Percent of people with a formal qualification\*

73.0% vs 79.1%

#### Median income\*

\$29,000 vs \$28,500

\*For people aged 15 years and over.

### Households

#### Percent of households that own their dwelling\*

66.0% vs 64.8%

#### Median weekly rent

\$180 vs \$280

#### Percent of households with internet access

70.5% vs 76.8%

\*Or hold it in a family trust.