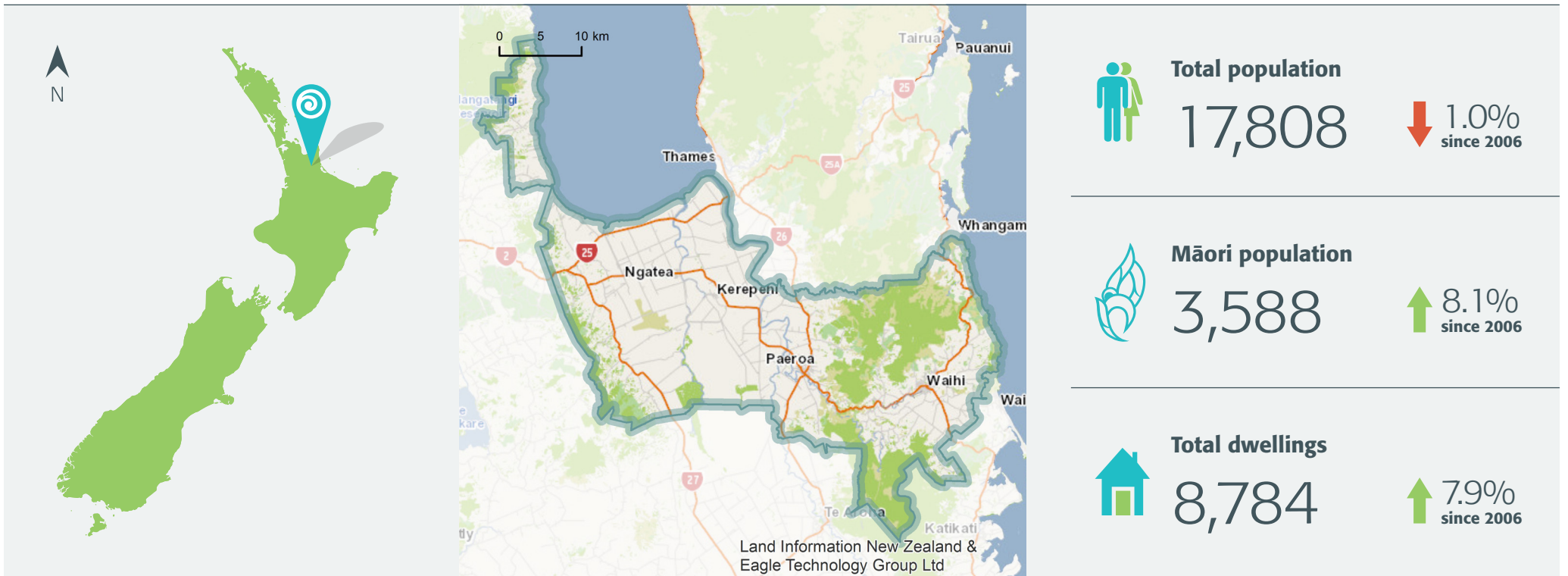
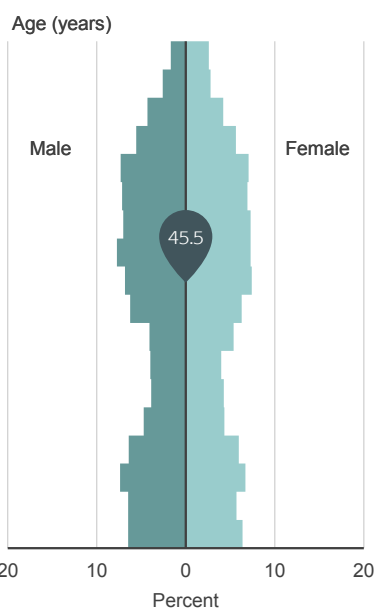


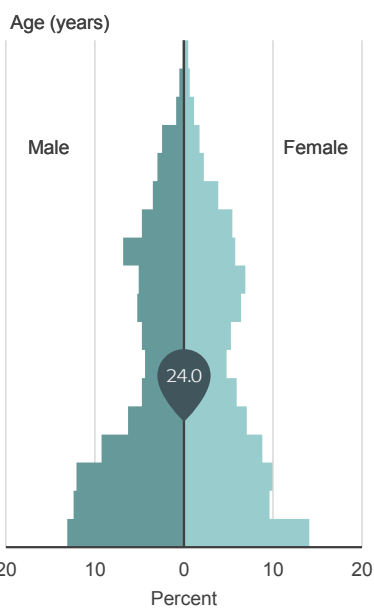
QuickStats about Hauraki District



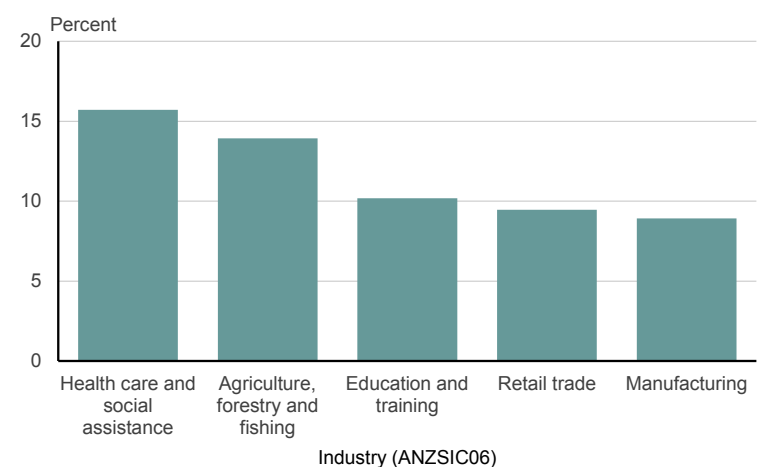
Age and sex of people
Hauraki District
2013 Census



Age and sex of Māori
Hauraki District
2013 Census



Top five industries in Hauraki District
By employee count
For year ended February 2013



How Hauraki District compares with the national average

Individuals

Major ethnic groups

	European	85.2%	vs	74.0%
	Māori	21.2%	vs	14.9%
	Pacific peoples	2.4%	vs	7.4%
	Asian	2.5%	vs	11.8%
	Middle Eastern/ Latin American/ African	0.2%	vs	1.2%
	Other	1.8%	vs	1.7%

Percent born overseas

12.0% vs 25.2%

Percent of people with a formal qualification*

65.3% vs 79.1%

Median income*

\$23,100 vs \$28,500

*For people aged 15 years and over.

Households

Percent of households that own their dwelling*

65.3% vs 64.8%

Median weekly rent

\$210 vs \$280

Percent of households with internet access

63.4% vs 76.8%

*Or hold it in a family trust.